

# Pathway to the Future:

## Tools for Leading Through Global Public Health and Social and Racial Injustice Crises

**Larisa Genin**, Dean of the W. Frank Barton School of Business and Professor at Wichita State University

**Eileen Stremmel**, Inaugural Dean and Professor of Music, The UCLA Herb Alpert School of Music

**Betsy Tutelman**, Senior Vice Provost for Strategic Communications and Professor of Media Studies and Production, Temple University

**Joseph Youngblood II**, Senior Vice President for Transformational Learning & External Affairs, Kean University

# Joseph Youngblood II

*Senior Vice President for Transformational  
Learning & External Affairs*

Kean University



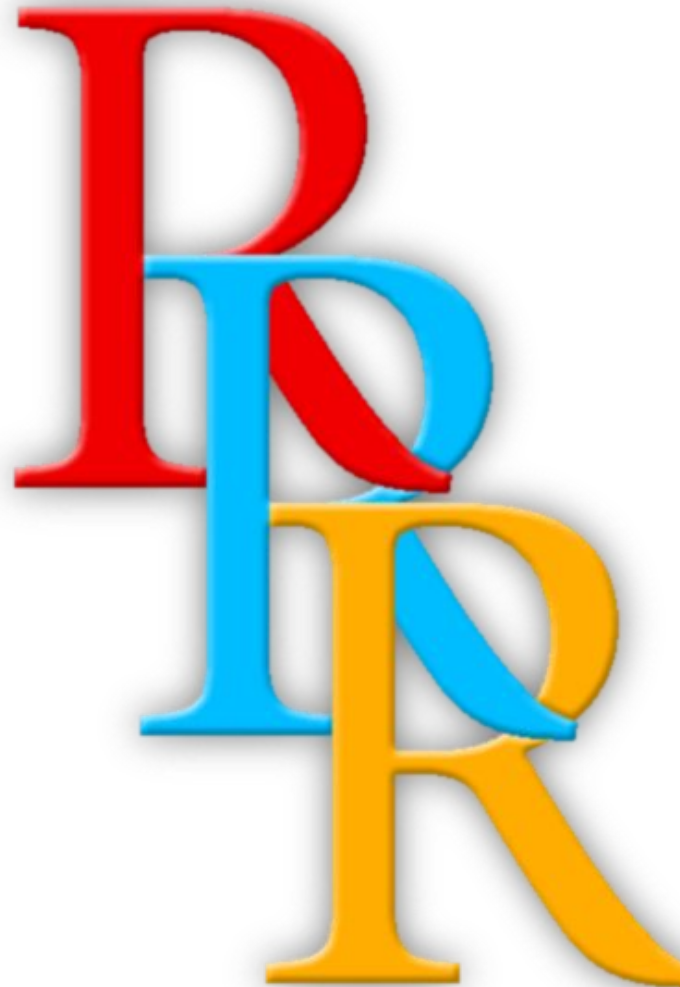
KEAN  
UNIVERSITY

# From the New Deal to the New Normal

---

3Rs as a Catalyst for R2

*“Risk, Reaction and Resilience”*





# How do we transform Challenges into opportunities?

*The problem of the twentieth century  
is the problem of the color line..."*

— **Dr. WEB Du Bois**, Scholar, Activist and Author. *Philadelphia  
Negro*, 1899; *The Souls of Black Folk*, 1903





*“Du Bois' words ring true today and the primary issue of the 21st century remains that of race in this country.”*

-NPR's Clarence Page on the 138 birthday of Dr. WEB Du Bois





# What is the role of a Public Research University?

*"...[T]he academy must become a more vigorous partner in the search for answers to our most pressing social, civic, economic, and moral problems, and must affirm its historic commitment to the scholarship of engagement."*

— **Dr. Ernest Boyer**, Former President The Carnegie Foundation for the Advancement of Teaching

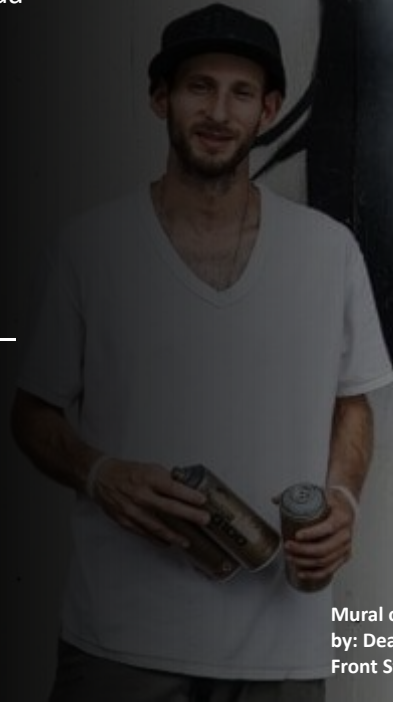


# New Jersey's Public Urban Research University

Watson Institute for Urban Policy and Research:  
Leading NJ's Urban Policy Agenda

Urban Revitalization and  
the Renaissance of New Jersey's Urban Centers

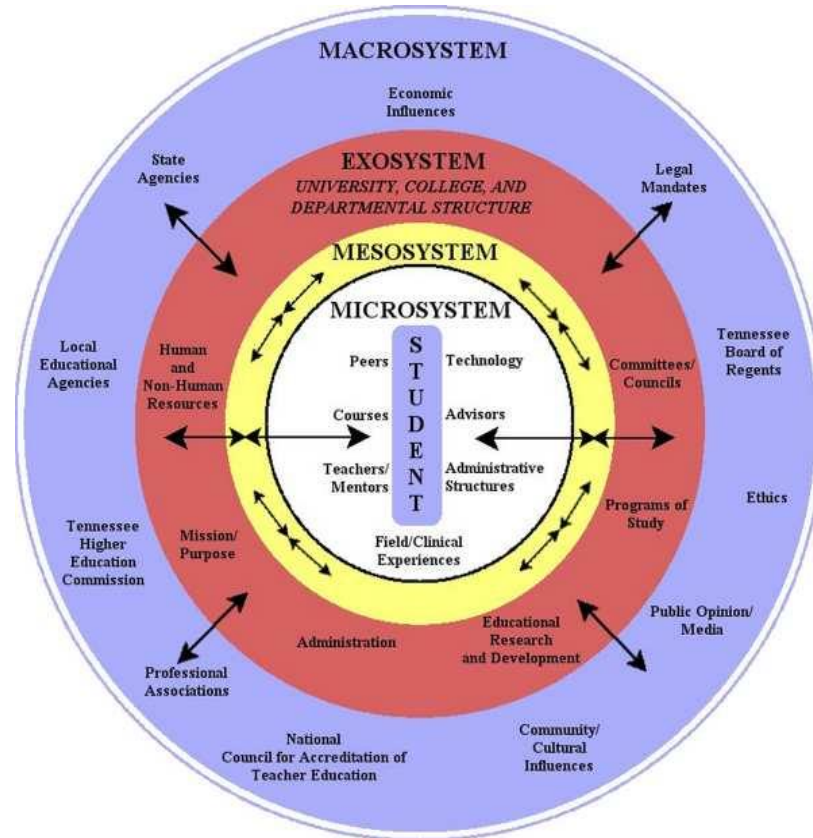
---



Mural of former pro-skateboarder Harold Hunter  
by: Dean "Ras" Innocenzi  
Front Street, across from Mill Hill Park



# Colleges as Complex Ecological Systems





Transformation.







# Innovation.

---

Artistic Rendering of the New Artwalk installations and the upcoming Asphalt Art intersection transformation supported by Bloomberg Philanthropies.



# Sustainable Impact!

*"We Are Survivors" Mural Series*

*By: .Leon "Rain" Rainbow*

*Sprout U School of the Arts,  
Trenton*

The “Cognitive and Emotional Dissonance” of Leading and Planning Through Crises





# Betsy Tutelman

*Senior Vice Provost for Strategic Communications and  
Professor of Media Studies and Production*  
Temple University



# The campus in transition

Photographer, Joseph V. Labolito, Temple University

We are one Temple







# Communication, Collaboration, Transparency

Photography, Ryan S. Brandenburg, Temple University

# Taking Care of Our Students



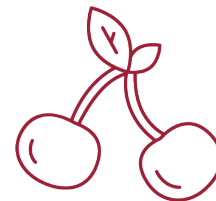
Student Affairs  
Emergency Fund

388 students  
awarded  
**\$343,732**



Student Technology  
Assistance

133 students  
awarded  
**\$11,550**



Cherry Pantry  
(Food Pantry)

**1,669**  
bags of food  
distributed since  
March 2020





Flexibility

Photographer, Ryan S. Brandenburg, Temple University



# Adaptability

Photographer, Joseph V. Labolito, Temple University



# the peaceful protest



Photo: Maggie Andresen, Temple '16





Resilience

Photographer, Ryan S. Brandenburg, Temple University

# Larisa Genin

*Dean of the W. Frank Barton School of Business  
and Professor*

Wichita State University

# INNOVATIVE STRATEGIC PLAN POWERED BY MAGNETIC INCLUSIVE ENVIRONMENT

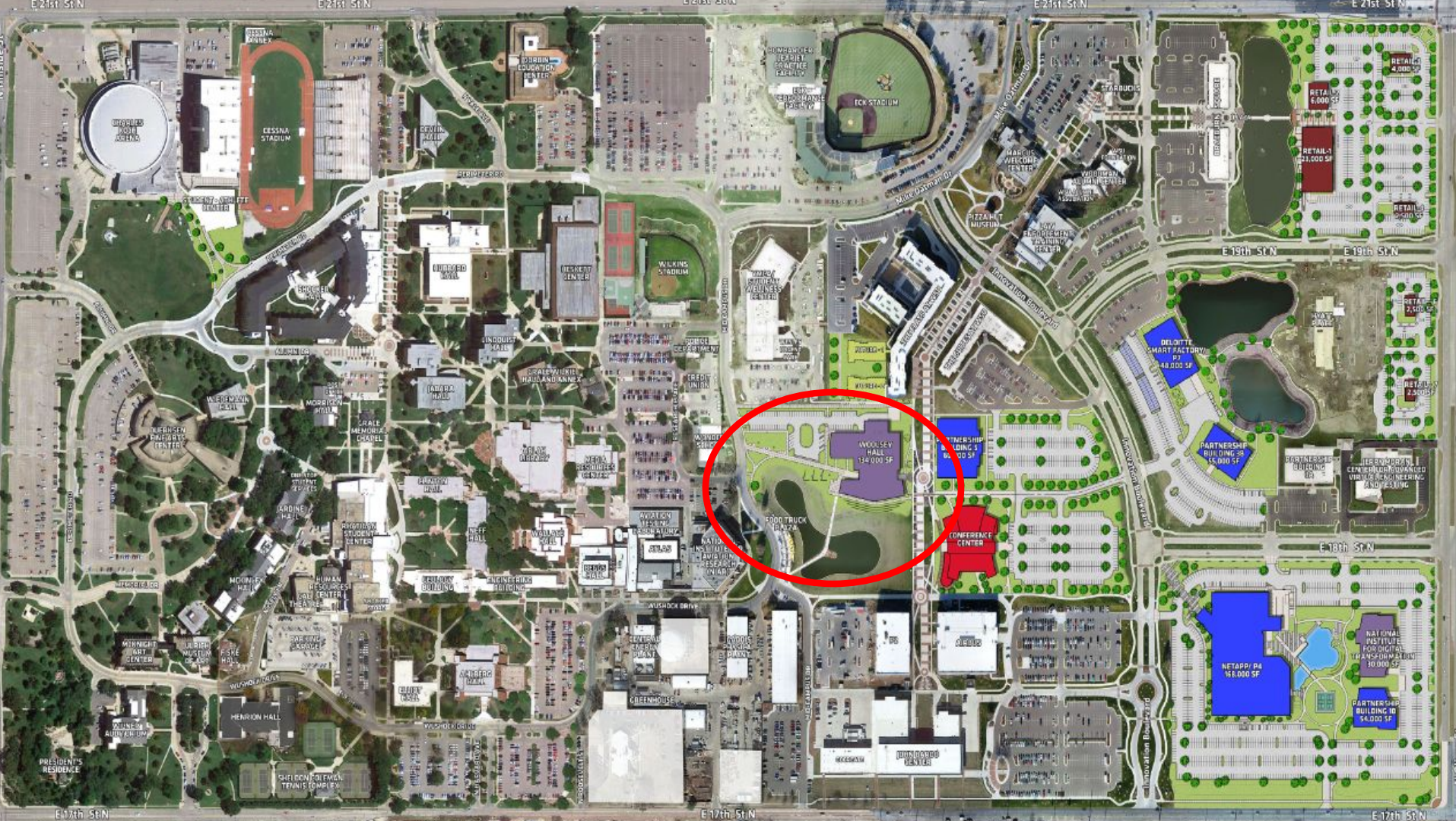






# INNOVATION CAMPUS DEVELOPMENT



















Wayne and Kay Woolsey Hall

Academics

Research

Industry





Innovation

Impact

Engagement



# Eileen Strempel

*Inaugural Dean and Professor of Music*

The UCLA Herb Alpert School of Music







COVID-19







Compassion











**UCLA**

Herb Alpert School of Music

# INAUGURAL BOARD OF ADVISORS



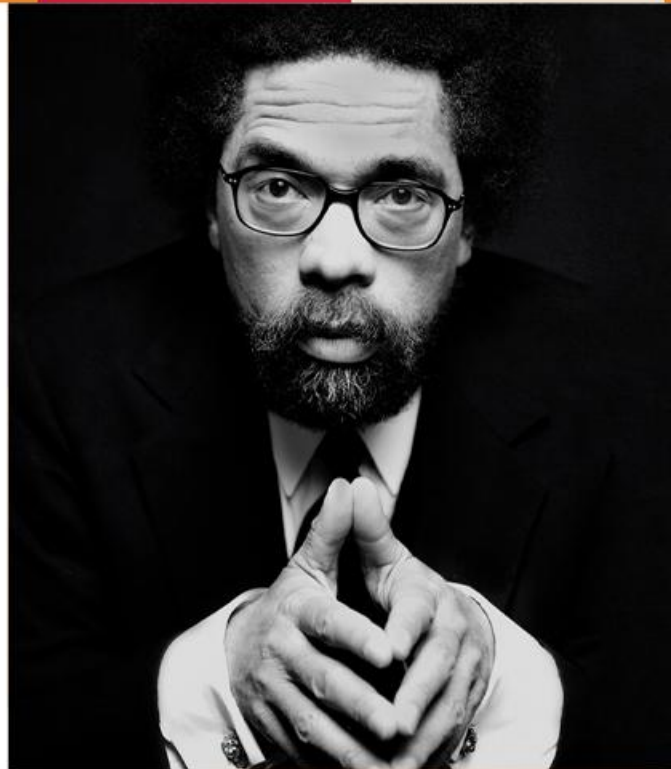
# ***STILL WAITING***

S P E A K E R   S E R I E S

**DR. CORNEL WEST**

**UCLA**

**Herb Alpert School of Music**













UCLA  
Herb Alpert  
School of Music



