

A vision for Tomorrow's Workforce Education...Delivered

THE NEW LANIER TECHNICAL COLLEGE HALL COUNTY CAMPUS

AGENDA

- Introductions
- Lanier Tech History / Demonstration of Need
- Programming
- Master Planning
- Community Engagement / Economic Development
- The New Campus
- Q/A





MARK LEVINE, FAIA

Vice President | Architecture
Pond



TODD DOLSON, AIA

Vice President
Stevens & Wilkinson



Dr. Ray Perren

President of Lanier Technical College



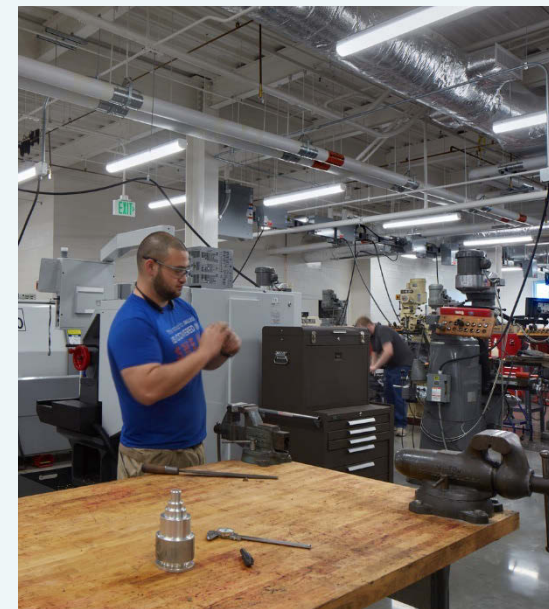
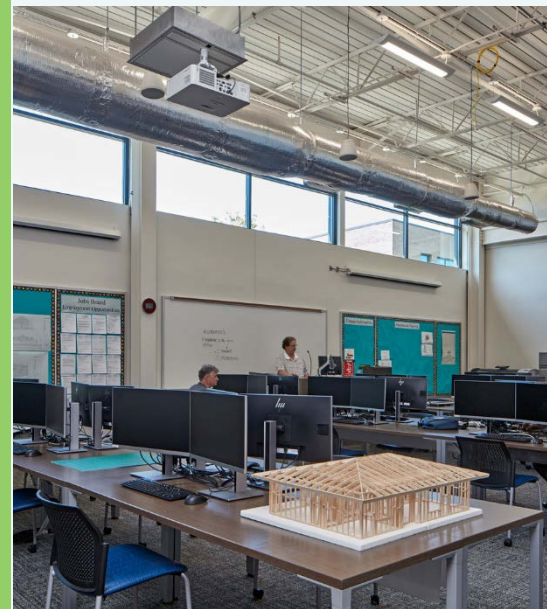
COLLEGE MISSION

To meet the workforce development needs of the area by providing technical and adult education to support the economic development and well-being of the people, communities, and companies of Banks, Barrow, Dawson, Forsyth, Hall, Jackson, and Lumpkin counties.

LTC prepares people for successful work; therefore, the College plays a major role in their life-long education. It improves the intellectual and technical skills of area residents and prepares students and trainees for jobs by providing adult education, general academic and technical education, customized business and industrial training, economic development services, and continuing education.



Workforce Development



NE Georgia Major Employers



Northeast Georgia
Medical Center



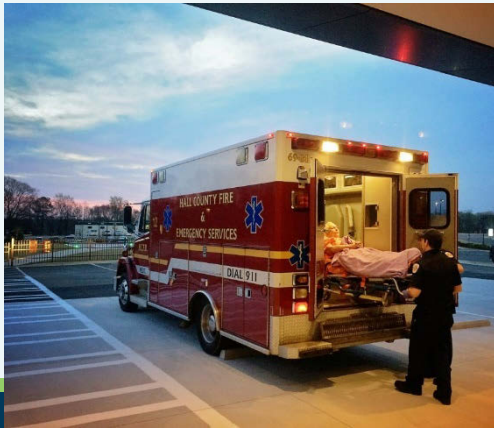
Kubota
Manufacturing of
America



King's Hawaiian
Bakery East



Victory Processing,
LLC



Lanier Tech History



County	Base-Census-April 1, 2010	2030 Estimate	Change from Base	Rate	2050 Estimate	Change from Base	Rate
Banks	18,395	19,427	1,032	5.61%	19,129	734	3.99%
Barrow	69,367	114,081	44,714	64.46%	187,785	118,418	170.71%
Dawson	22,339	30,251	7,912	35.42%	40,003	17,664	79.07%
Forsyth	175,511	334,694	159,183	90.70%	597,255	421,744	240.29%
Hall	179,684	244,958	65,274	36.33%	318,828	139,144	77.44%
Jackson	60,485	83,313	22,828	37.74%	114,473	53,988	89.26%
Lumpkin	29,966	37,267	7,301	24.36%	44,201	14,235	47.50%
Lanier Tech Service Area	555,747	863,991	308,244	55.46%	1,321,674	765,927	137.82%
Georgia	9,687,653	12,173,406	2,485,753	25.66%	14,709,321	5,021,668	51.84%



Lanier Tech History



2015 Charge from the State

New campus in Gainesville to replace Oakwood campus

21st century / technology-driven

Continuing education and training

Property not selected

Phased funding

Anticipated seven buildings

325,000 square feet

Classes to start January 2019

June 2015 Bond Sale - Project List

Agency	Fiscal Year	Transaction Description	Available For Bond Sale	June 2015 Project List
			\$1,212,644,000	\$1,074,770,000
			\$800,000	\$800,000
			\$750,000	\$750,000
			\$800,000	\$800,000
			\$1,100,000	\$1,100,000
			\$2,500,000	\$2,500,000
			\$3,080,000	\$3,080,000
			\$12,500,000	\$12,500,000
			\$500,000	\$500,000
			\$500,000	\$500,000
			\$1,685,000	\$1,685,000
			\$2,855,000	\$2,855,000
			\$10,000,000	\$0
			\$10,000,000	\$10,000,000
			\$11,650,000	\$11,650,000
			\$900,000	\$900,000
			\$1,700,000	\$1,700,000



REQUEST FOR QUALIFICATIONS
RFQ No. TCSG-327-0P

Design/Professional Services for
Project No. TCSG-327
New Hall County Campus
Lanier Technical College
Hall County, Gainesville, Georgia

The Georgia State Financing and Investment Commission ("GSFIC" or "Owner"), on behalf of the Technical College System of Georgia ("TCSG" or "Using Agency") and Lanier Technical College, is soliciting statements of qualifications from firms interested in providing professional design services for the construction of a project known as **Project No. TCSG-327, New Hall County Campus** for Lanier Technical College, located in Hall County, Gainesville, Georgia ("Project"). This Request for Qualifications (RFQ) seeks to identify potential providers of the above-mentioned services. Some firms that respond to this RFQ, who are determined by the Owner to be sufficiently qualified, may be deemed eligible and may be invited to interview and offer proposals for these services. All respondents to this RFQ are subject to instructions communicated in this document, and are cautioned to completely review the entire RFQ and follow instructions carefully. GSFIC reserves the right to reject any or all statements of qualifications or proposals, and to waive technicalities and informatics at the discretion of GSFIC.

1. GENERAL PROJECT INFORMATION

Project Description

Lanier Technical College (LTC) is a unit of the Technical College System of Georgia (TCSG) and began as Lanier Area Vocational Technical Institute in 1964. The first classes began in the fall of 1966 with the current permanent Oakwood campus opening in January 1967. The past forty eight years have seen tremendous growth and change on the campus and at the college. LTC has become an integral part of the entire Lake Lanier/Hall County community, but time has caught up and begun to pass the aging facilities.

Lanier Tech has seen tremendous growth in enrollment and of course amazing advances in technology not only in the programs of instruction but within the colleges' daily functions and mission. Student enrollment has increased 6.74% from 2013 to 2014 to 3,277 students served, all on a campus of 168,000 GSF in buildings nearly a half century old.

The 2015 Georgia Legislative session concluded with a \$10,000,000 appropriation for the land acquisition and design of a completely new replacement campus for Lanier Tech. The successful design firm or team selected will be responsible for the master planning, programming, design documentation and contract administration for the entire 50-75 acre campus. The site selection process is currently underway and should be completed by the beginning of 2016. It is anticipated that the project construction will take place in two phases over a four year period and will include multiple buildings covering approximately 275,000 to 325,000 GSF and associated surface parking, all with an approximate value between \$65M and \$75M. Actual scope, budget and schedule will depend greatly on future funding from the state legislature which may impact the final project.

Lanier Tech and TCSG are in search of a design professional team that can visualize the campus of the future with facilities and features to sustain the college's established high level of educational excellence well into the 21st century. A design team that understands the mission of the college and TCSG, which is that of continuing education and training for the citizens and workforce of north central Georgia.

RFQ No. TCSG-327-0P 1

An Entire Campus!



Hall County Campus Partners



CLIENT

POND

STEVENS & WILKINSON
ARCHITECTURE ENGINEERING INTERIORS

HGOR

Rochester

“One
Comprehensive
Team”

DESIGN TEAM

NEW SOUTH
CONSTRUCTION
Building Value...Building Trust Since 1990


CARROLL DANIEL
CONSTRUCTION

CONSTRUCTION TEAM

“One Team”



Programming The Campus

Current Programs

- Adult Education
- General Studies
- Air Conditioning Technology
- Automotive Technology
- Automotive Collision Repair
- Motor Sports Technology
- Electrical Utility Technology
- Electrical Systems Technology
- Fire Science Technology
- Industrial Systems Technology
- Machine Tool Technology
- Material Fabrication Technology
- Welding/Joining Technology
- Dental Assisting
- Dental Hygiene
- Health Information Management Technology
- Healthcare Assistant/Healthcare Sciences Technology
- Clinical Lab Technician
- Medical Assisting
- Practical Nursing
- Nursing
- Paramedicine
- Pharmacy Technician
- Radiological Technician
- Surgical Technician

- Accounting
- Business Administration
- Computer Information Systems
- Criminal Justice
- Fire Science
- Cosmetology
- Esthetics
- Early Childhood Care and Education
- Marketing Management
- Networking
- Website Design
- Economic Development
- Ammonia Refrigeration Training
- Drafting

New/Modified Programs

- Marine Engine Technology
- Mechatronics (included in Industrial Systems)
- Poultry Science Technology (explored but removed)
- Wireless Engineering Technology
- Associate Degree - Nursing
- Multipurpose Conference Center
- Commercial Truck Driving
- Hospitality and Tourism
- Culinary Arts



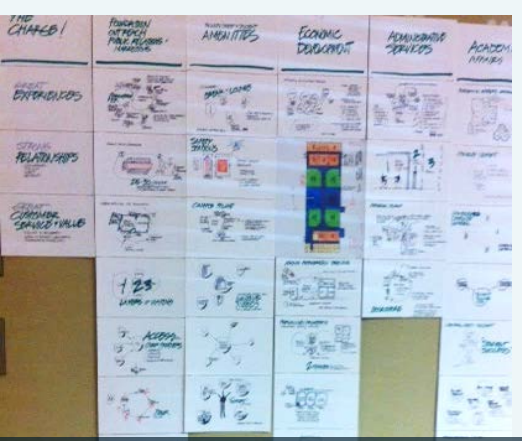
Stakeholder Engagement

Intense – Focused Month of Programming

	Programming Work Session Day 1 8/26/2015		Programming Work Session Day 2 8/27/2015		Programming Work Session Day 3 8/31/2015		Programming Work Session Day 4 9/1/2015		Programming Work Session Day 5 9/2/2015		Programming Work Session Day 6 9/3/2015	
	Wednesday	Attending	Thursday	Attending	Monday	Attending	Tuesday	Attending	Wednesday	Attending	Thursday	Attending
8:00 AM - 9:00 AM												
9:00 AM - 10:00 AM	Mtg 1: Administration and Operations Overview	City Doug Mark Megan	Mtg 1: Administration Services, Operations and Maintenance	City Doug Mark Megan	General Education, English, Humanities, History, Political Science, Speech, Psychology, Sociology, Mathematics, and Economics	City Doug Mark Megan	Student Affairs Overview	City Doug Mark Megan	Public and Professional Services Overview	City Doug Mark Megan	Technical and Industrial Automotive Collision Repair	City Doug Mark Megan
10:00 AM - 11:00 AM	Mtg 2: Administration and Operations Administration, Outreach, Foundation, Public Relations, and Marketing	City Doug Mark Megan	Mtg 2: Administration Services, Bookstore, Bursar, Human Resources	City Doug Mark Megan	General Education, Biology, Chemistry, Physics, Anatomy and Physiology	City Doug Mark Megan	Student Affairs, Operations, Student Life, and Support Services	City Doug Mark Megan	Public and Professional Services Early Childhood Care and Education	City Doug Mark Megan	Technical and Industrial Automotive Technology	City Doug Mark Megan
11:00 AM - 12:00 PM	Mtg 3: Administration and Operations Faculty, Staff, and Student Activities	City Doug Mark Megan	Mtg 3: Adult Education, Overview and Moderating Opportunities	City Doug Mark Megan	Business and Consumer Technology Overview	City Doug Mark Megan	Allied Health, Overview and Clinical Laboratory Technology	City Doug Mark Megan	Public and Professional Services Cosmetology, Esthetics, and Barbering	City Doug Mark Megan	Technical and Industrial Hairdressers/Hair Stylists Technology	City Doug Mark Megan
12:00 PM - 1:00 PM	Break		Break		Break		Student Affairs Meet with Student Government Association (Working Lunch)	City Doug Mark Megan	Break		Administration and Operations Institutional Effectiveness (Working Lunch)	City Doug Mark Megan
1:00 PM - 2:00 PM	Mtg 4: Administrative Services, Operations, and Services	City Doug Mark Megan	Mtg 4: Academic Affairs Overview	City Doug Mark Megan	Business and Consumer Technology Accounting, BAC, Business Management, and Marketing Management	City Doug Mark Megan	Allied Health, Radiologic Technology	City Doug Mark Megan	Public and Professional Services Residence and Criminal Justice	City Doug Mark Megan	Technical and Industrial Engineering Technology and Industrial Systems Technology	City Doug Mark Megan
2:00 PM - 3:00 PM	Mtg 5: Economic Development, Continuing Education and Contact Training	City Doug Mark Megan	Mtg 5: Academic Affairs Support Services, Library, Open Labs, Tutorial Services	City Doug Mark Megan	Business and Consumer Technology Computer Information Systems, Networking, Website Design, Gaming, Computer Forensics, and Cyber Security	City Doug Mark Megan	Allied Health, Surgical Technology	City Doug Mark Megan	Public and Professional Services Dierling	City Doug Mark Megan	Technical and Industrial Welding and Joining Technology and Advanced Materials Interlaminar Composites	City Doug Mark Megan
3:00 PM - 4:00 PM	Mtg 6: Economic Development, Annual Registration Training	City Doug Mark Megan	Mtg 6: Information Technology Overview	City Doug Mark Megan	Allied Health, Overview and Clinical Laboratory Technology	City Doug Mark Megan	Allied Health, Nursing and Practical Nursing	City Doug Mark Megan	Technical and Industrial Overview and Marine, Drafting Technology	City Doug Mark Megan	Technical and Industrial Electric Utilities Technology	City Doug Mark Megan
4:00 PM - 5:00 PM	Mtg 7: Economic Development, Conference Center	City Doug Mark Megan	Mtg 7: General Education Overview and Learning Support	City Doug Mark Megan	Allied Health, Dental Programs	City Doug Mark Megan	Allied Health, Medical Assisting	City Doug Mark Megan	Technical and Industrial Machine Tool Technology	City Doug Mark Megan	Technical and Industrial Electric Systems Technology	City Doug Mark Megan
5:00 PM - 6:00 PM	Mtg 8: Faculty and Professional Services, Culinary Arts, Hospitality, and Tourism	City Doug Mark Megan	Mtg 8: Technical and Industrial Wireless Engineering Technology	City Doug Mark Megan	Allied Health, Para medicine	City Doug Mark Megan	Allied Health, Pharmacy Technology	City Doug Mark Megan	Public and Professional Services Poultry Science Technician	City Doug Mark Megan	Technical and Industrial Air Conditioning Technology	City Doug Mark Megan
6:00 PM - 7:00 PM							Community and Business Partners Surgical Tech	City Doug Mark Megan				



Stakeholder Engagement



Collaborative

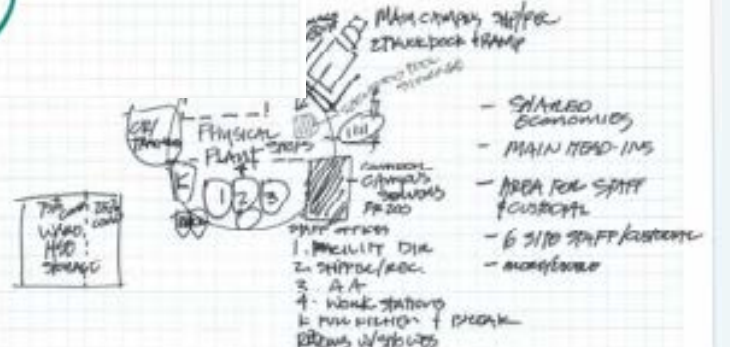
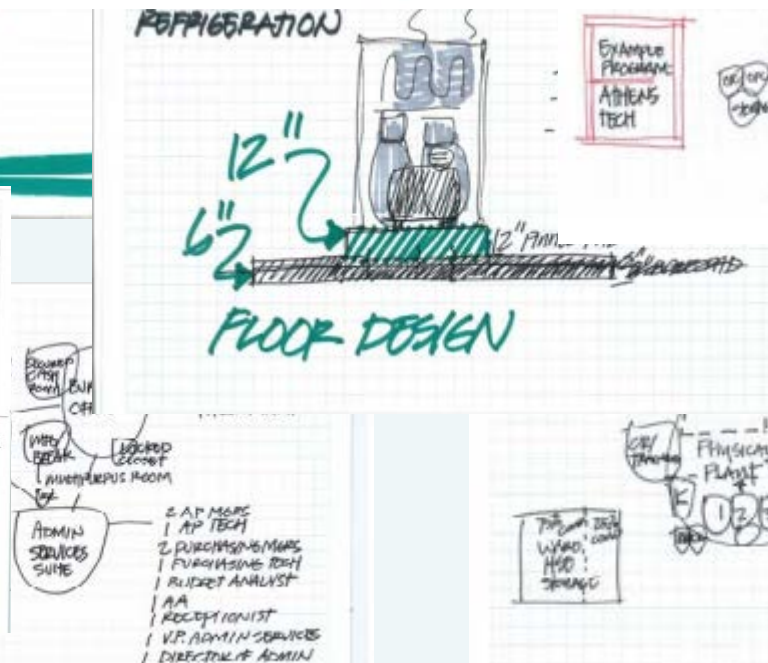
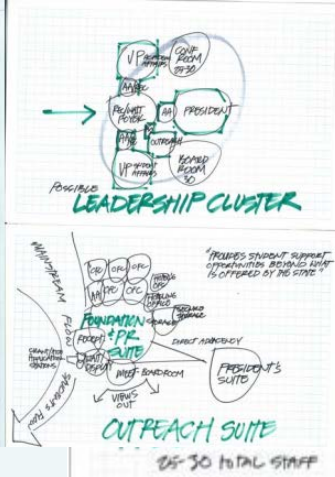
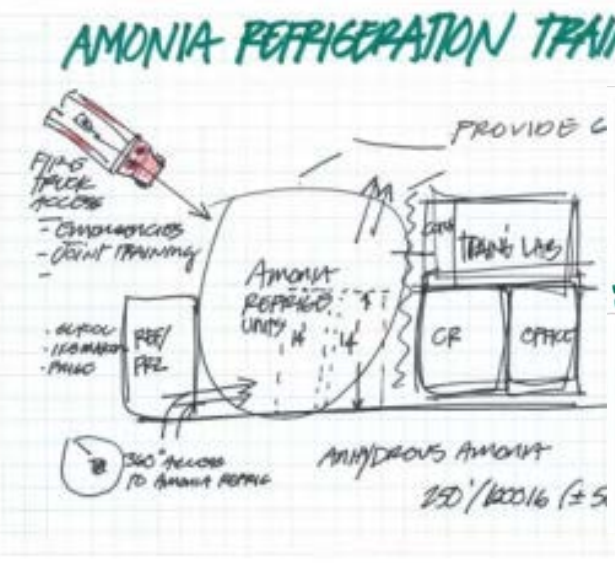
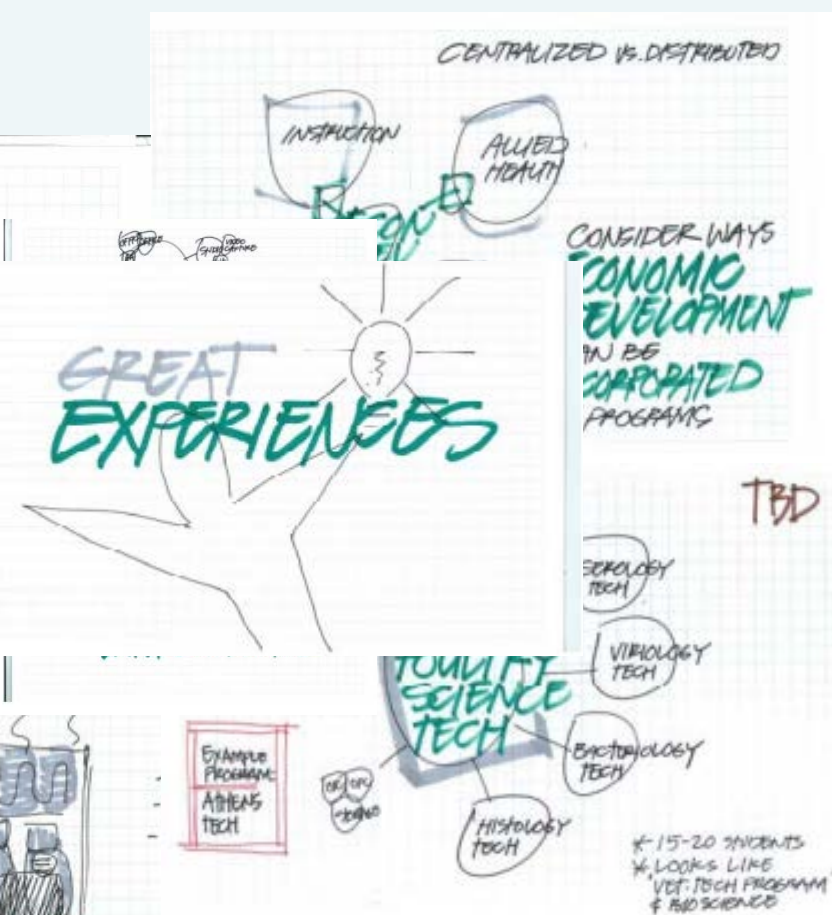
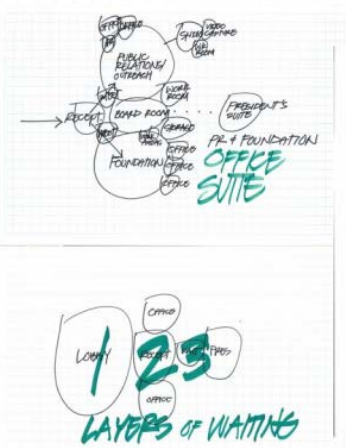
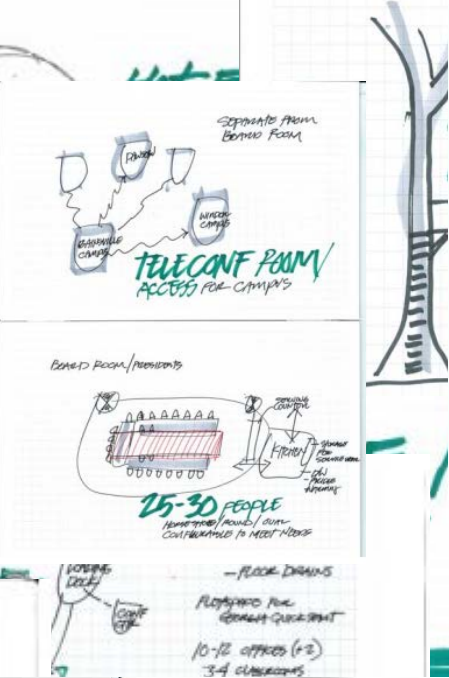
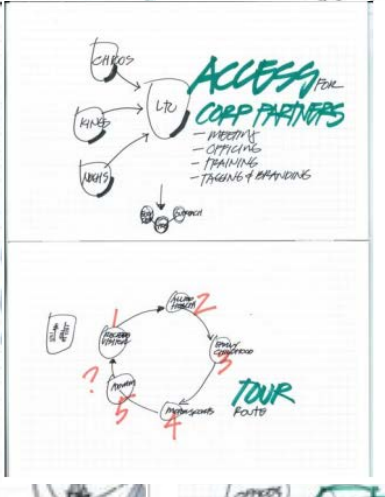
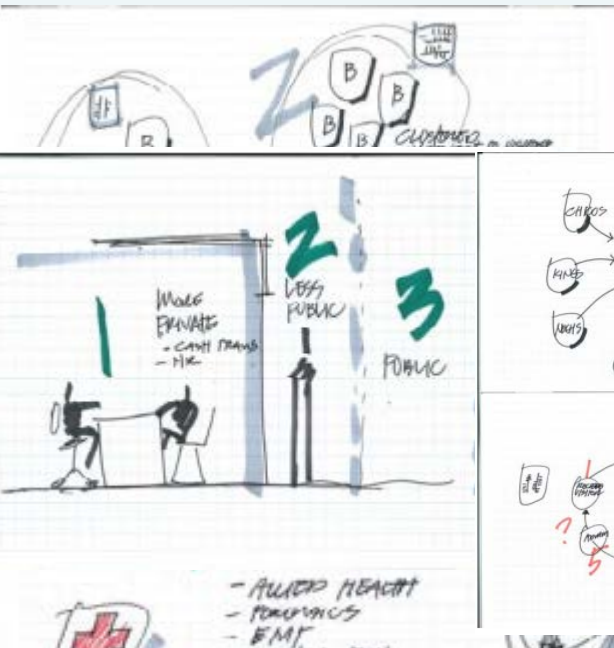
Inclusive

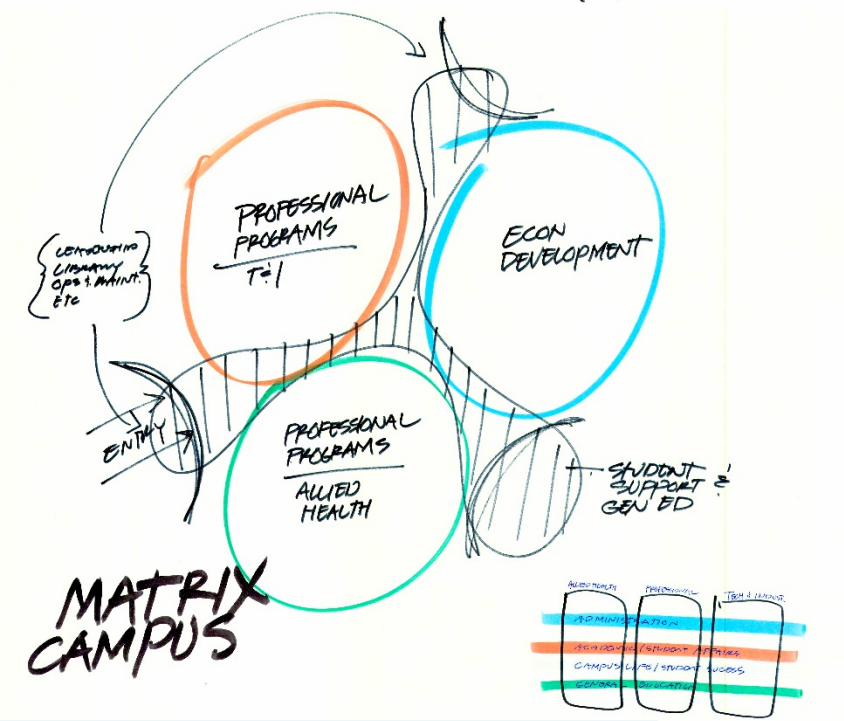
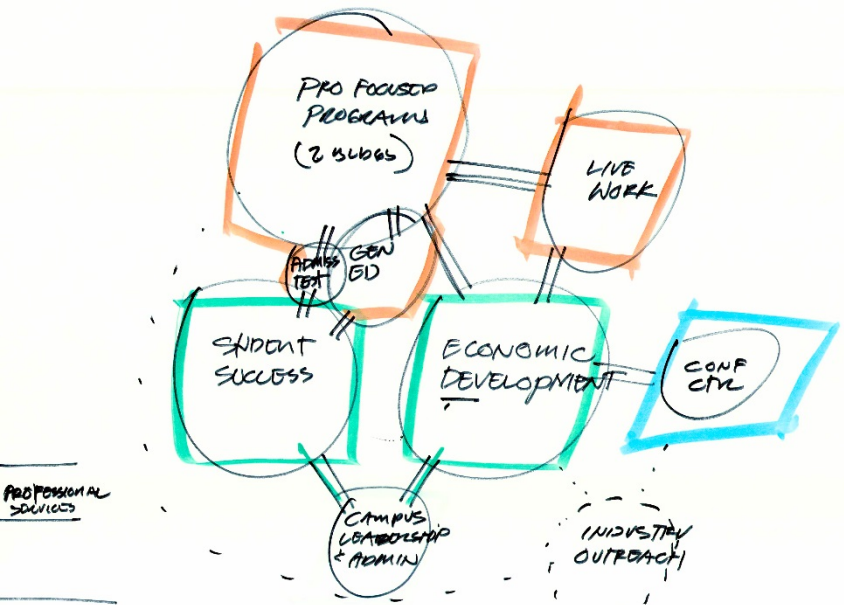
Open Book



Utilization Study

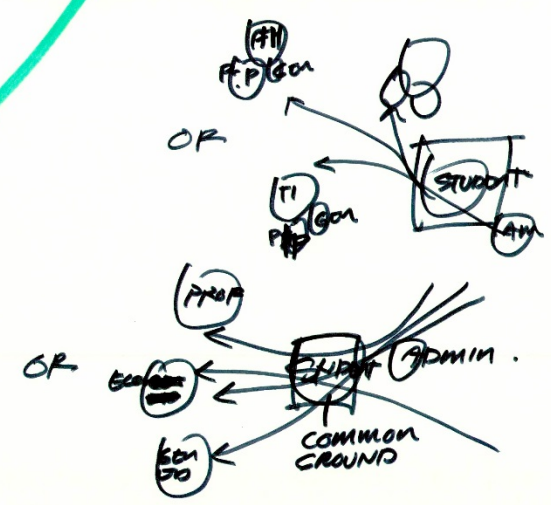
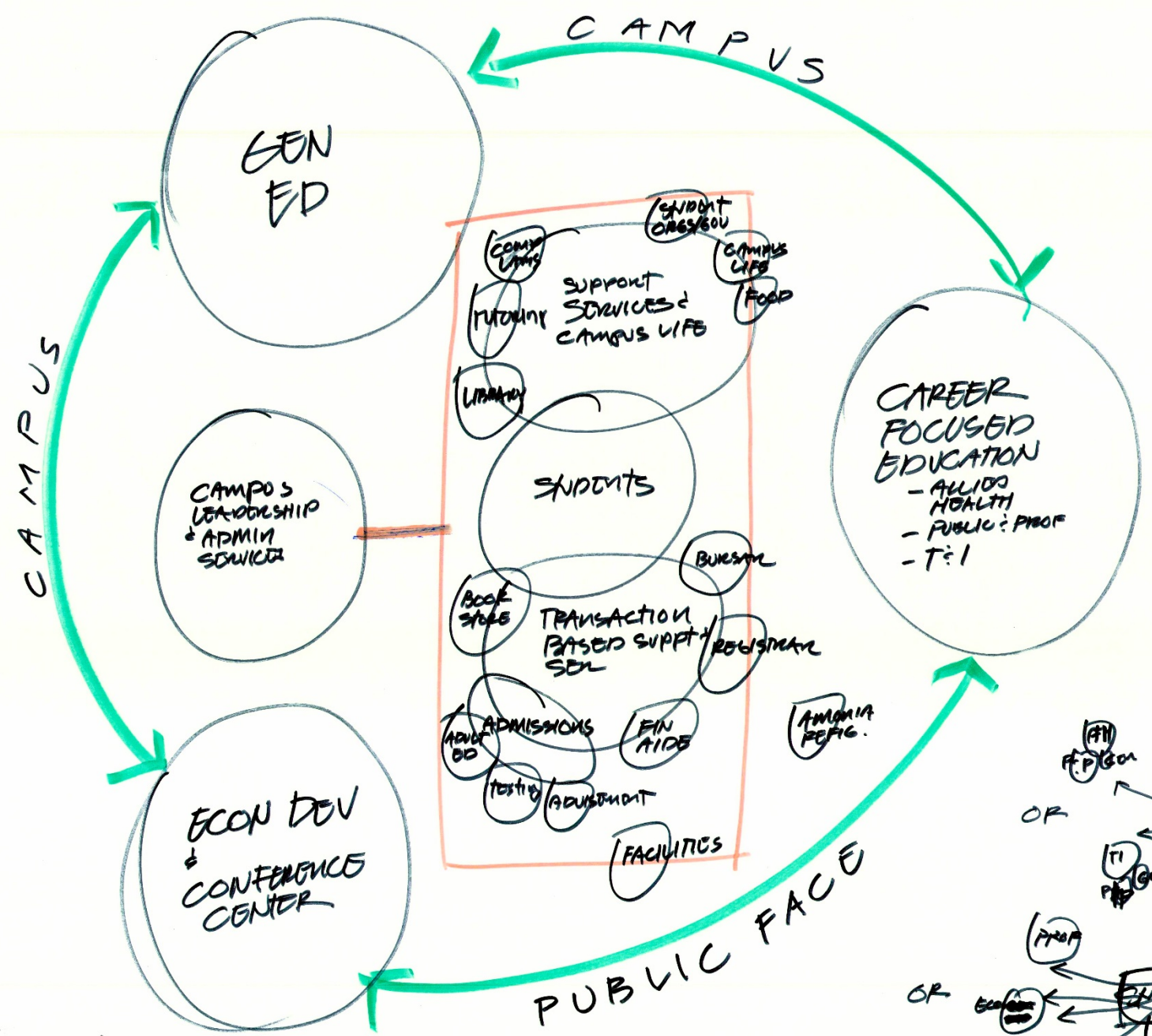
Programming / Conceptualization Tools





Area	Professional	Task & Support
PROFESSIONAL	PROFESSIONAL	TASK & SUPPORT
STUDENT SUPPORT & GEN ED	STUDENT SUPPORT & GEN ED	STUDENT SUPPORT & GEN ED
CAMPUS LIFE / STUDENT SERVICES	CAMPUS LIFE / STUDENT SERVICES	CAMPUS LIFE / STUDENT SERVICES
INDUSTRY OUTREACH	INDUSTRY OUTREACH	INDUSTRY OUTREACH

STUDENT FOCUS



Exterior Program Components

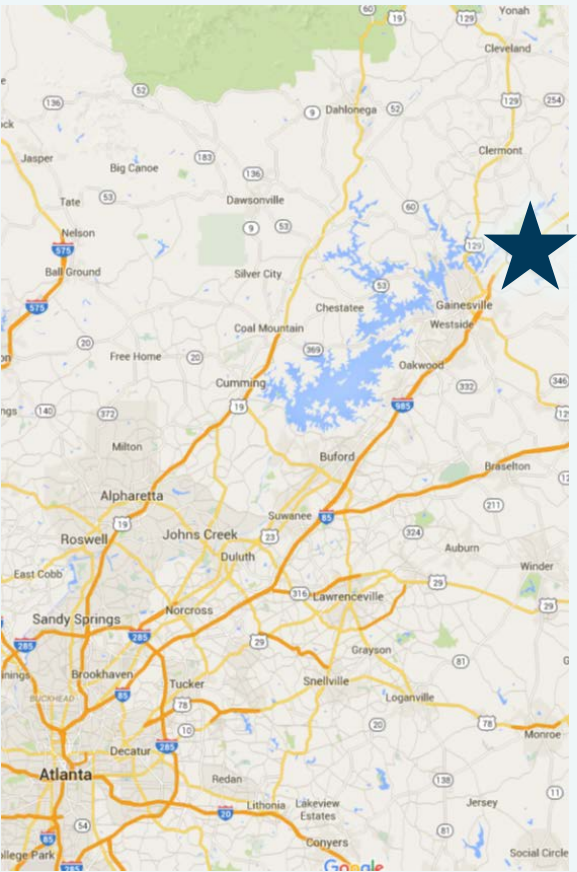
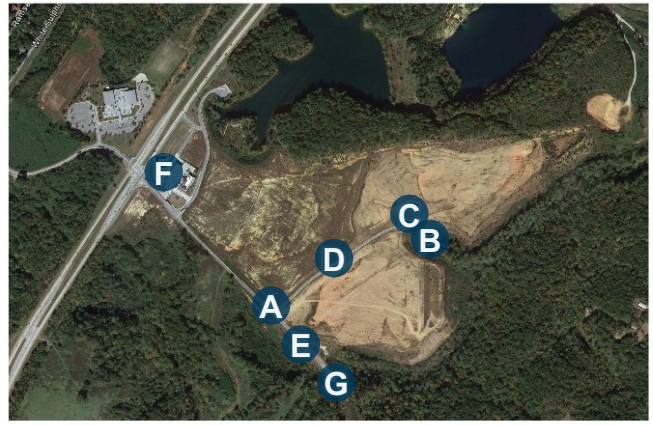


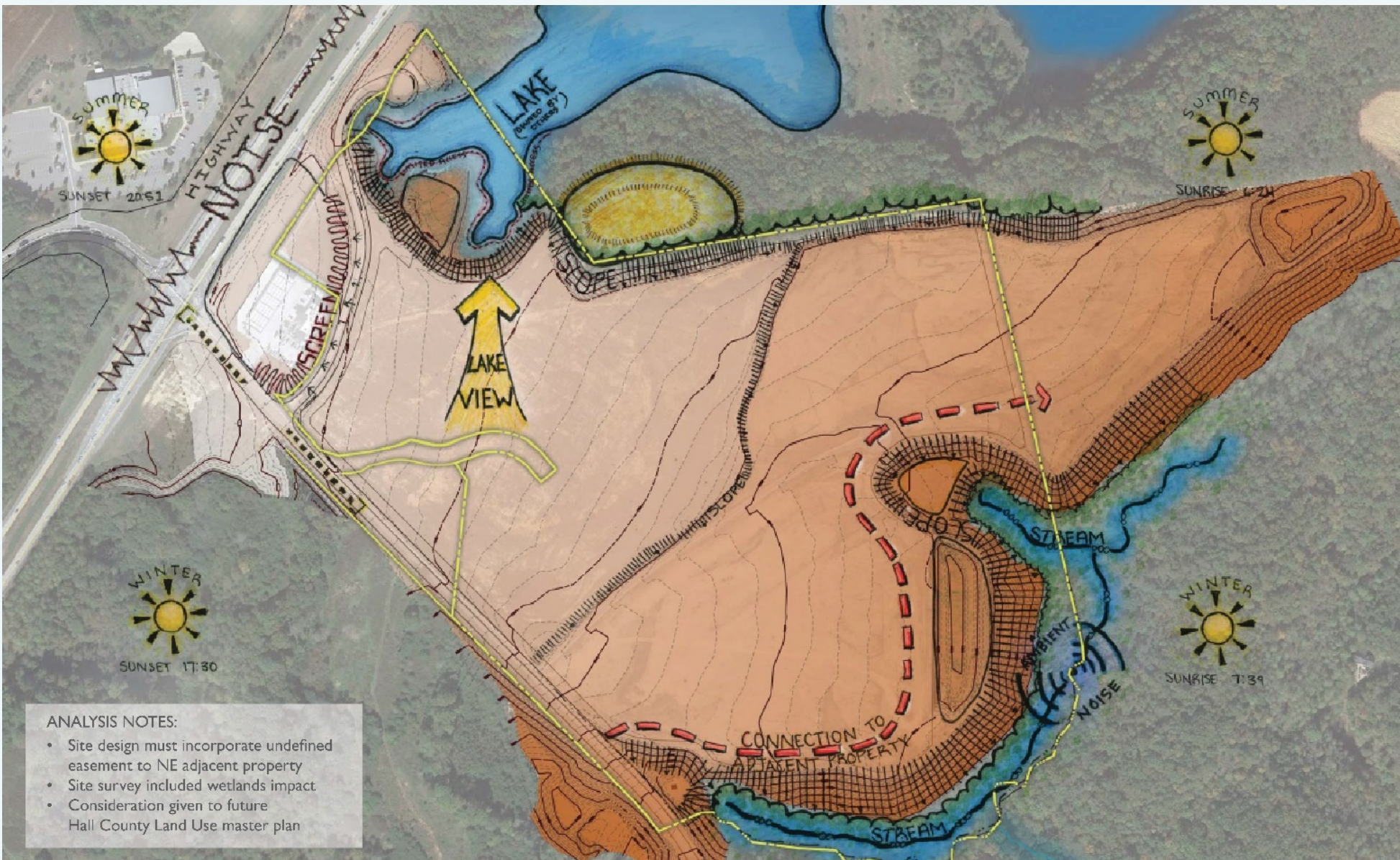
Master Planning The Campus

It all starts with the site



THE SITE





- ANALYSIS NOTES:**
- Site design must incorporate undefined easement to NE adjacent property
 - Site survey included wetlands impact
 - Consideration given to future Hall County Land Use master plan

Site Analysis

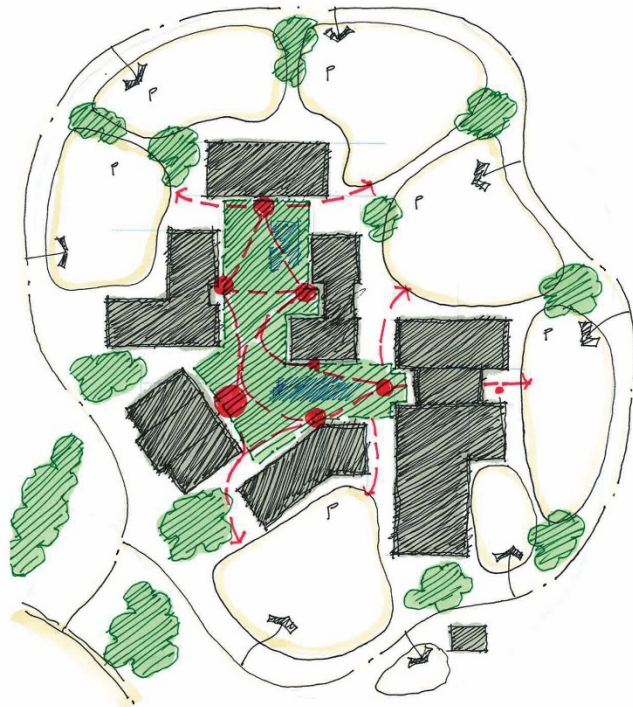
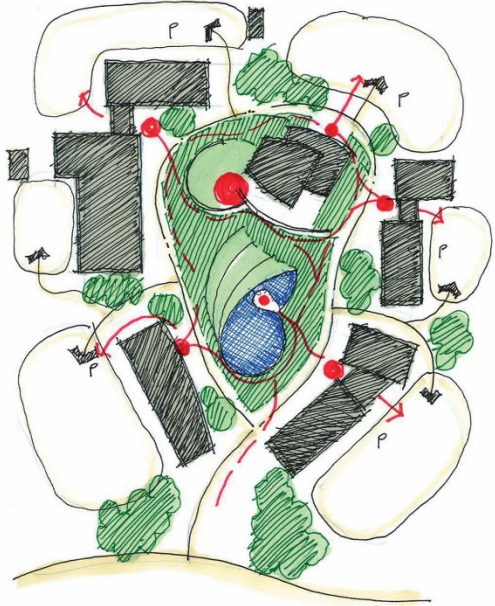
- Soils
- Topography
- Traffic
- Views
- Neighboring properties /access



Master Plan Charrette

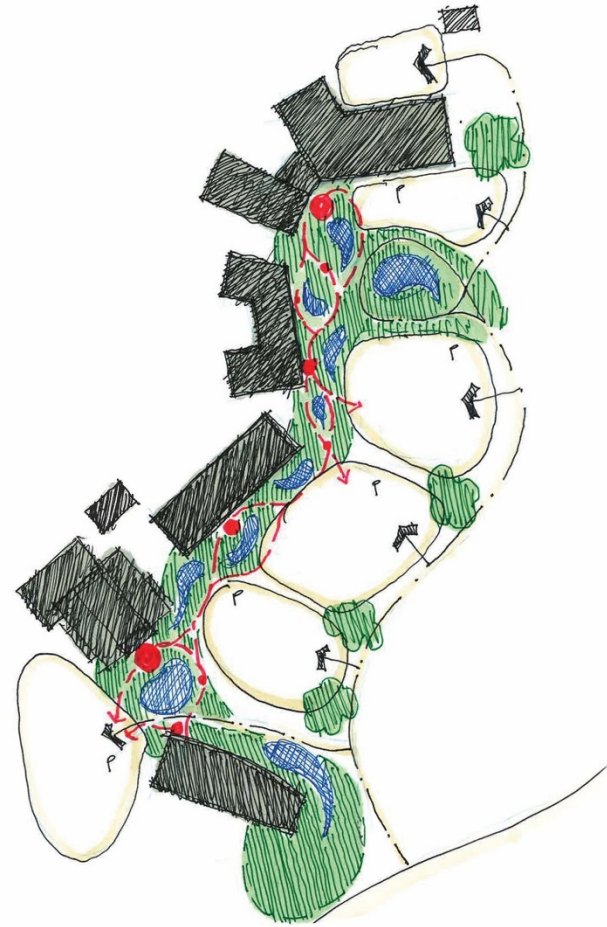
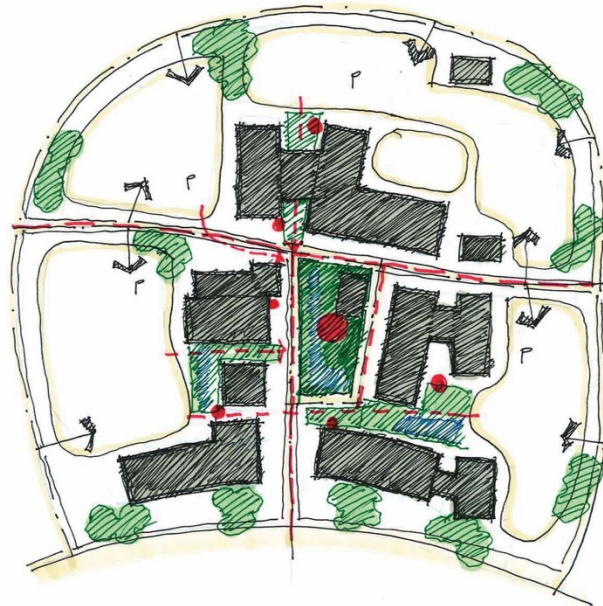


Civic



Campus

Village



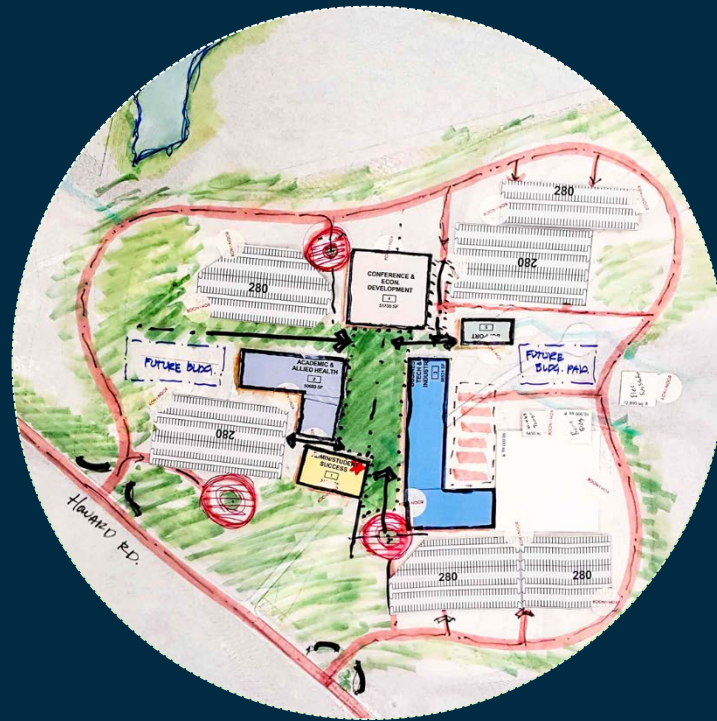
Workplace





TOWN SQUARE CONCEPT

1



QUAD CONCEPT

2



LINEAR CONCEPT

3

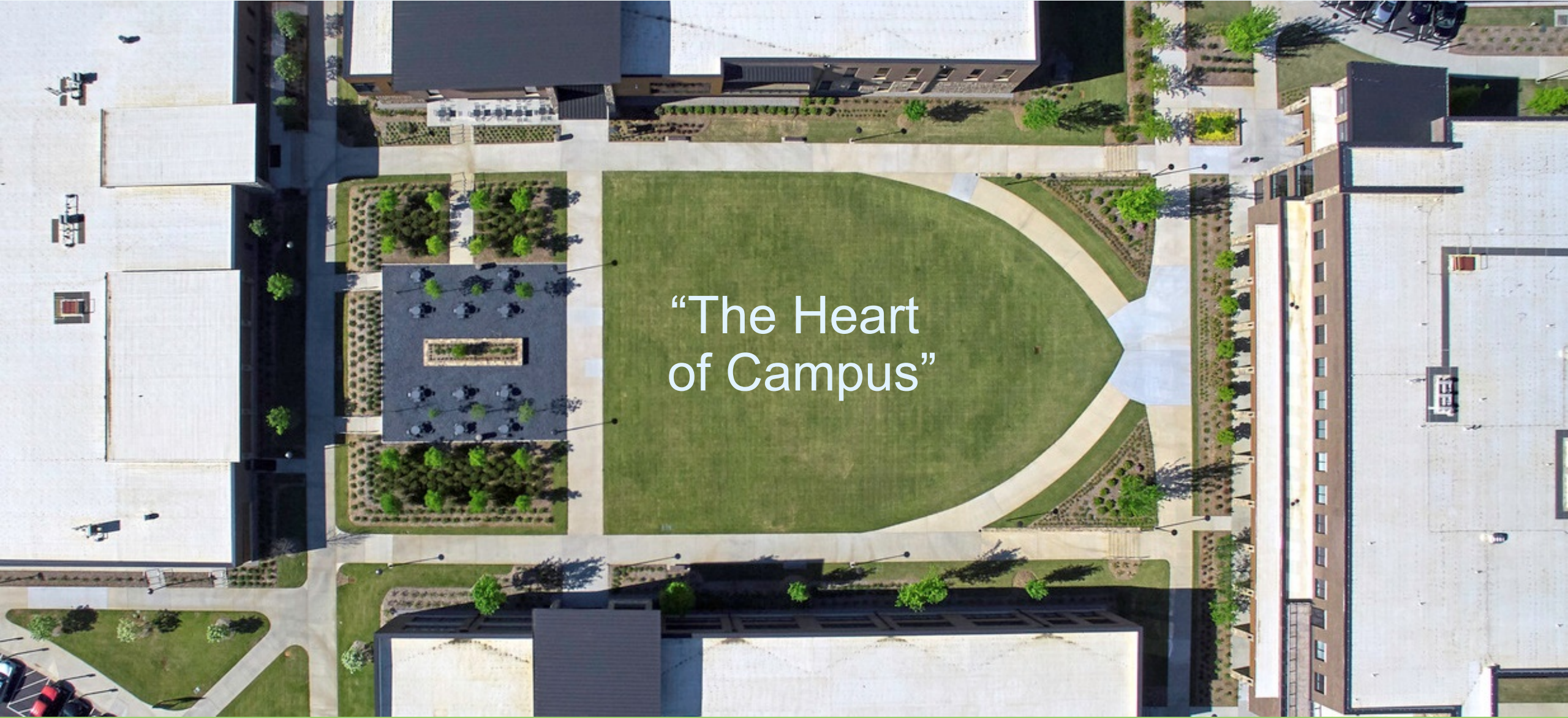


Master Plan



Topography

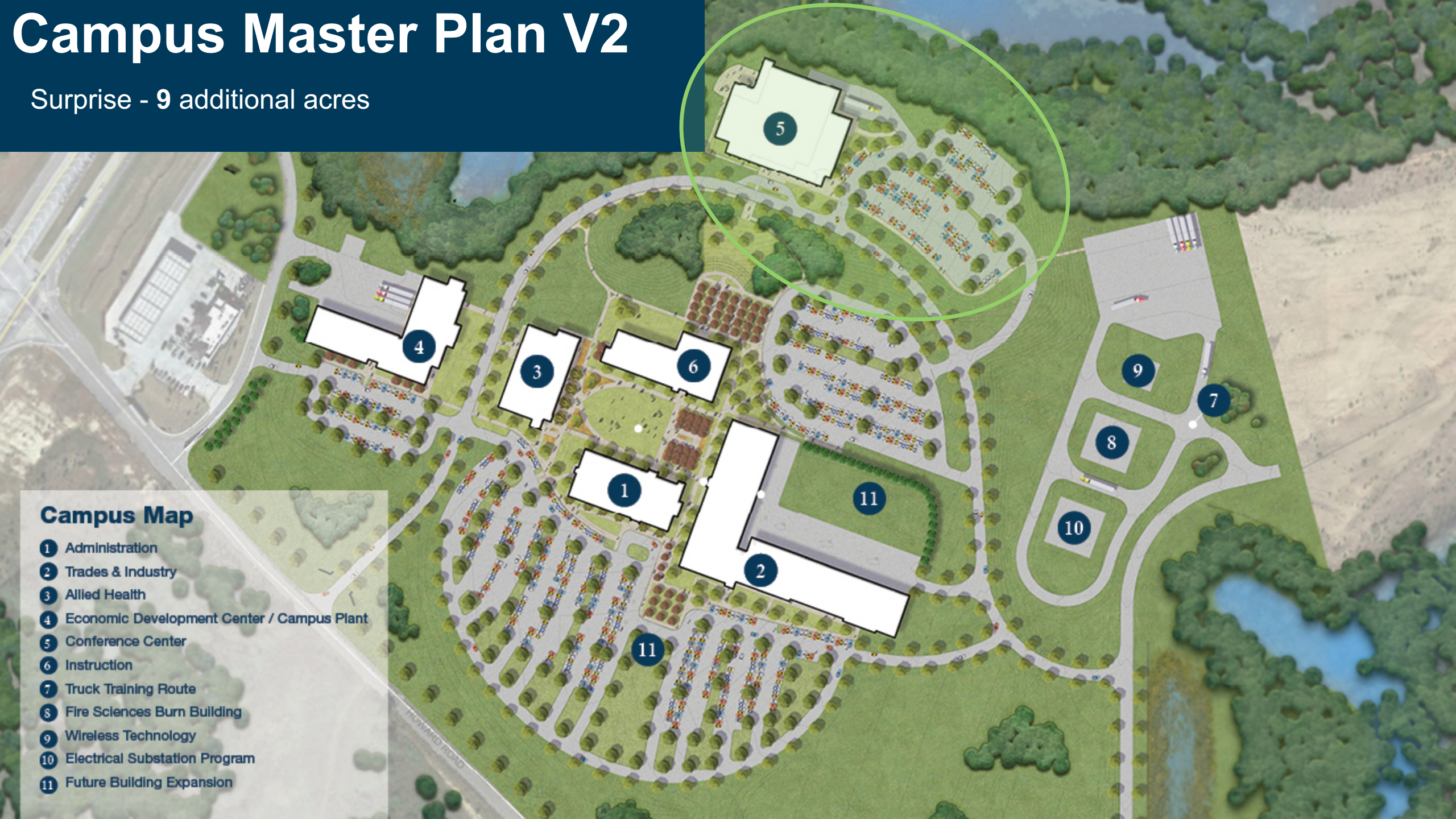
Importance of the Quad



“The Heart of Campus”

Campus Master Plan V2

Surprise - 9 additional acres

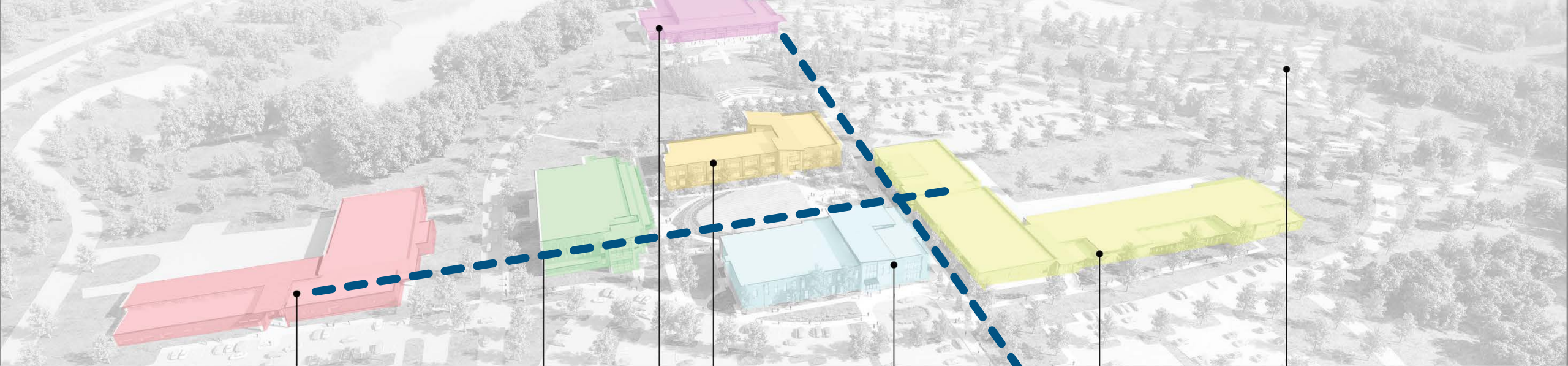


Campus Map

- 1 Administration
- 2 Trades & Industry
- 3 Allied Health
- 4 Economic Development Center / Campus Plant
- 5 Conference Center
- 6 Instruction
- 7 Truck Training Route
- 8 Fire Sciences Burn Building
- 9 Wireless Technology
- 10 Electrical Substation Program
- 11 Future Building Expansion

The Outdoor Campus – Student Connections





Campus Support & Economic Development

- Central Plant
- Ammonia Refrigeration Program
- Workforce Development Flex Labs
- Economic Development Training Facilities

Allied Health

- Nursing
- Nursing Assist
- Rad Tech
- Surgi Tech
- Med Assist
- Clinical Lab
- Pharmacy Tech
- Dental Programs
- Paramedicine

Conference Center

- Culinary Arts
- Hospitality
- Student Lought
- Campus Bookstore
- Conference Room
- Exhibit Hall

Instruction

- Business & Computer Tech
- Public & Professional
- Early Childhood Development
- General Education
- Adult Education
- Accelerated/Dual Enrollment
- GED Programs
- ESL Programs

Administration & Student Success

- Student Success
- Library
- Tutoring Center
- Social Lounge
- Student Affairs
- Institutional Effectiveness
- President's Suite
- Administrative Services
- Academic Affairs
- Campus Police

Technology & Industry

- Motor Sports
- Auto Collision
- Electrical Systems
- Electrical Utilities
- Machine Tools
- Advanced Materials
- A/C Tech
- Auto Tech
- Marine Tech
- Wireless Tech
- Drafting
- Cosmetology
- Esthetics
- Fire Science
- Criminal Justice
- Commercial Truck Driving

Exterior Campus Educational Areas

- Live Fire Burn Tower
- Outdoor fire Lab
- Motorsport Pit Simulation
- Elect Utilities Substation
- Wireless Tech Tower Simulator
- Commercial Driving Apron and Driving Course



Community Engagement

Economic Development



Community Engagement - Live Work Programs



Community Engagement - Conference Center



Community Engagement - Amphitheater



The New Campus

Image Study

- Transparent
- Indigenous
- Outdoor Connections



Natural

Image Study

Modern

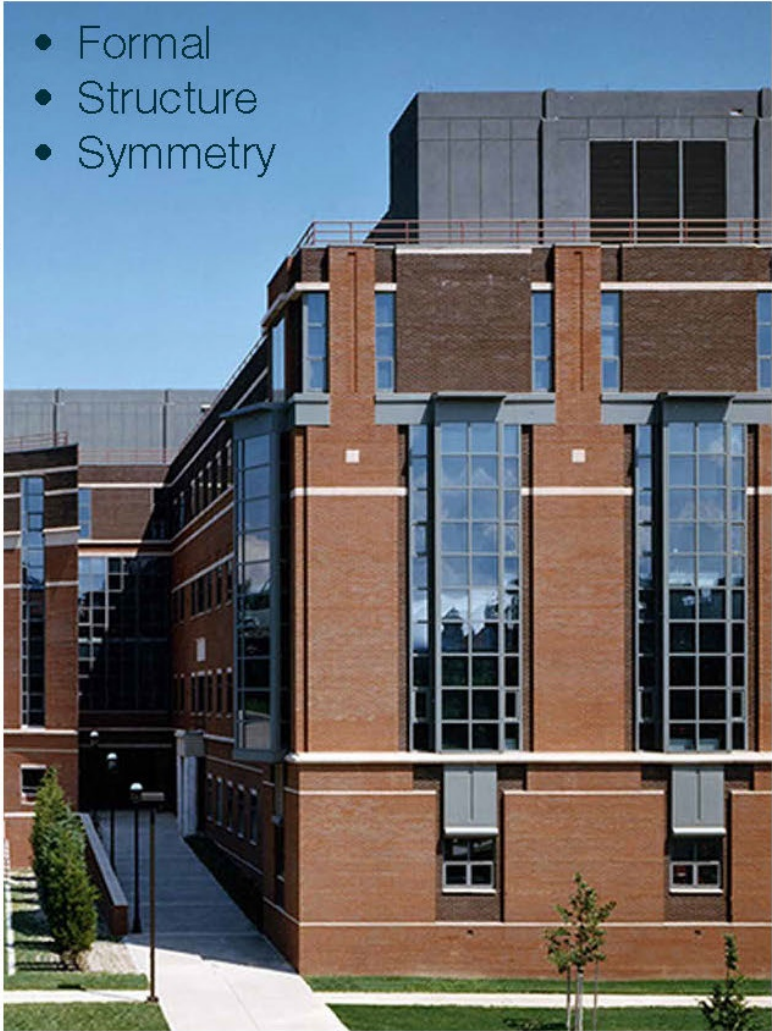


- Progressive
- Industrial
- Unique



Image Study

Traditional



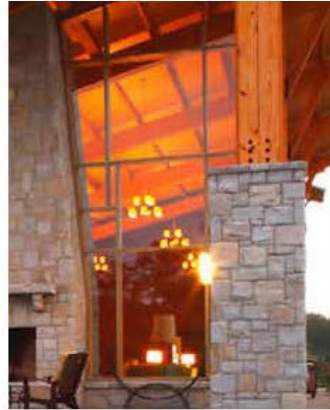
- Formal
- Structure
- Symmetry



Material Palette



IRONSPOT BRICK



STONE & WOOD



METAL PANEL



WOOD/STEEL FRAME & GLASS



GRANITE/STONE & GLASS



WINDOW WALL & WOOD



METAL & WOOD COMPOSITION



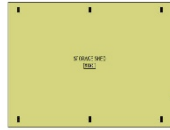
Image Study



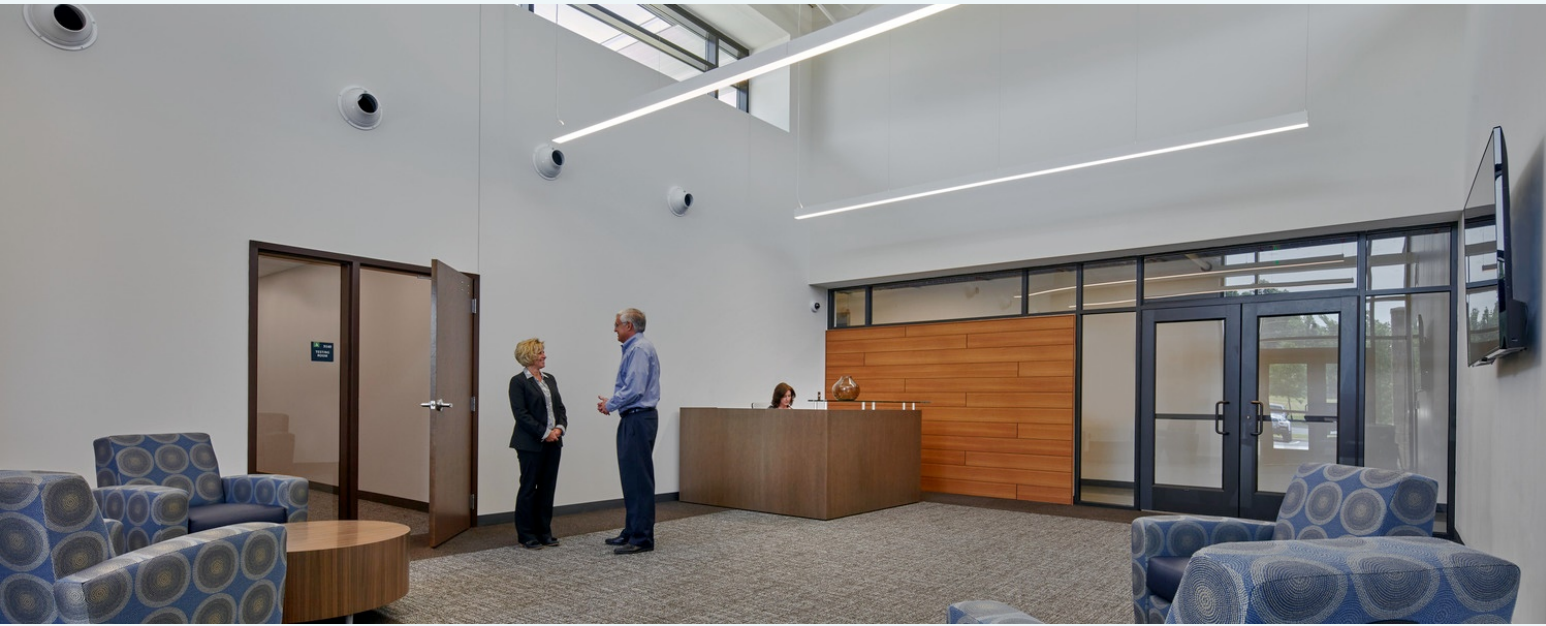
Gov. Nathan Deal Economic Development Center

Department Legend

- ADMIN
- ADMINISTRATION
- AMMONIA REFRIGERATION
- CENTRAL PLANT
- CIRCULATION
- CLASSROOM
- CORE
- FLEX LAB
- IT
- PEARSON TESTING
- STORAGE







Central Plant as a Teaching Tool



Ammonia Refrigeration Program





Breeden-Giles Hall Administration Building | Level 1 & 2









Beeden-Giles
Hall
Administration &
Medical Records

Kubota Manufacturing Applied Technology Center | Level 1 & 2



- Department Legend
- A/C Tech
 - Automotive
 - Circulation
 - Classroom
 - Collision
 - Core
 - Elec Systems Tech
 - Elec Utilities Tech
 - Industrial Systems
 - Machine Tools
 - Marine Tech
 - Motor Sports
 - Welding
 - Wireless Tech



- Department Legend
- Admin Suite
 - Circulation
 - Classroom
 - Comm Truck Driving
 - Computer Lab
 - Core
 - Cosmetology
 - Drafting
 - Ethetics
 - Faculty
 - Fire Science/ Criminal Justice







Chris Riley Instructional Center | Levels 1 & 2









James A. Walters Allied Health Building | Level 1, 2 & 3

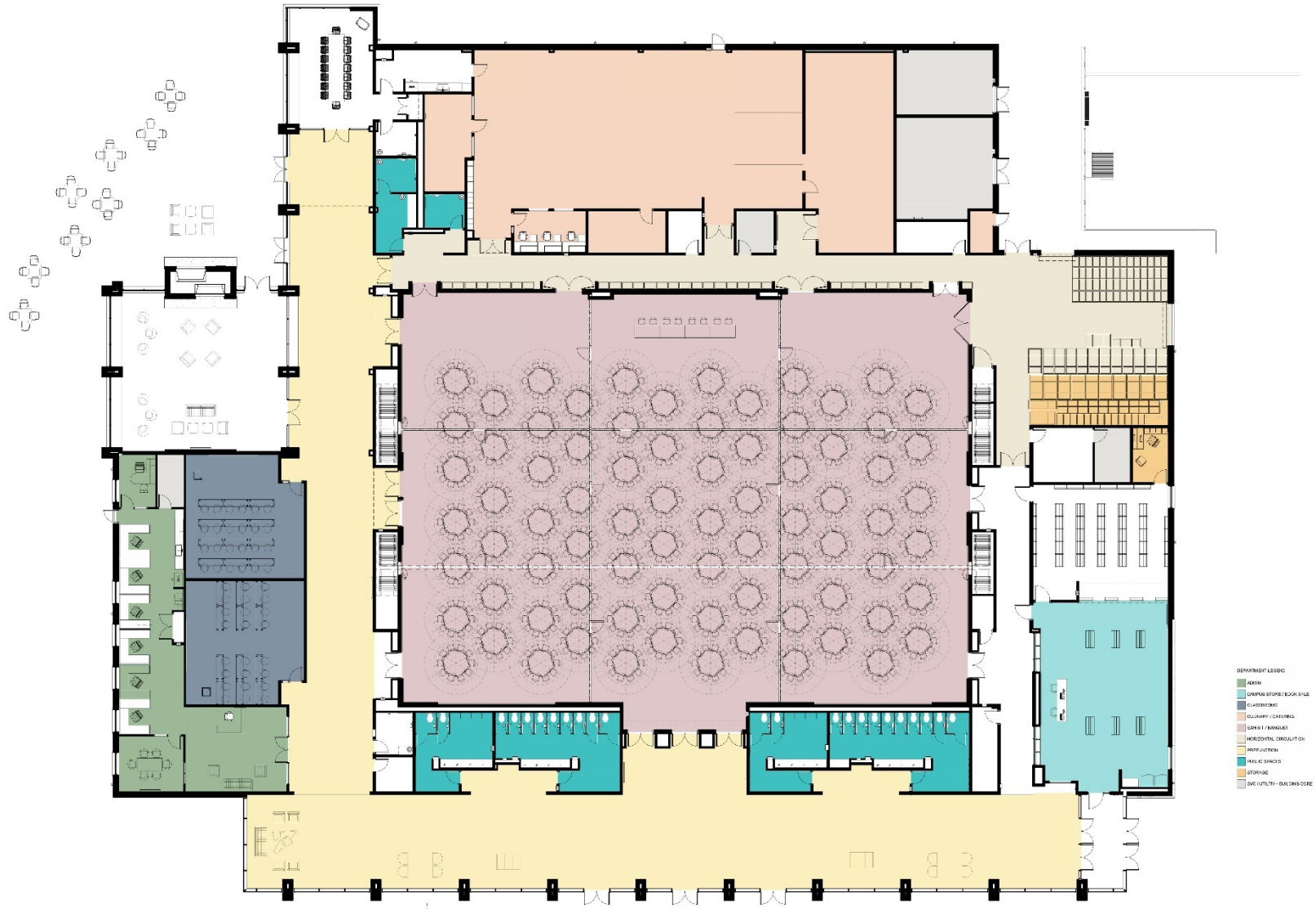








Wilbur & Dixie Ramsey Conference Center





WILBUR AND DIXIE RAMSEY CONFERENCE CENTER



Wilbur & Dixie Ramsey
Conference Center



The Outdoor Campus - Fostering Campus Connectivity







THE FUTURE OF WORKFORCE DEVELOPMENT IN NE GEORGIA



ANTICIPATES & PLANS
for the future.

DESIGNED to foster
relationships between
colleagues, faculty and staff.

CUTTING EDGE, but still
fits into the Northeast
Georgia community.

INTEGRATES student life
throughout the facility.

RESPECTS the history of
Lanier Technical College in
Hall County.

SUPPORTS community
partnerships.



Thank you!

