



LIFELONG DISCOURSE:

Incorporating a K-12 Facility
on Your Campus

Society of College and University Planners
Pacific Regional Conference 2019

University of Colorado - Boulder



PRESENTERS



Rachael Schuetz
Instructor / Master of Arts in Teaching
OSU-Cascades



David Bermudez (Bermi)
Executive Director / Lead Instructor
Bend Science Station



Jane M. Barker
Former Sr. Project Manager, OSU-Cascades
Current Associate Principal, Hennebery Eddy





SESSION OUTCOMES

- Identify and integrate institutional and curriculum priorities for K-12 and university programs to design for optimal teaching and learning outcomes
- Evaluate ideal location for K-20 program and develop facilities to support program
- Engage broader community, including existing groups and underserved schools, to prioritize program goals
- Foster K-20 discourse and learning that evolves and flexes to meet institutional and community needs

WHERE ARE WE?

Central Oregon:

- Deschutes, Jefferson, & Crook:
Population: 421,000
20% under the age of 18
- High School Graduates: 86%-94%
- Bachelor's Degree or higher:
17%-34%

Central Oregon Community College:

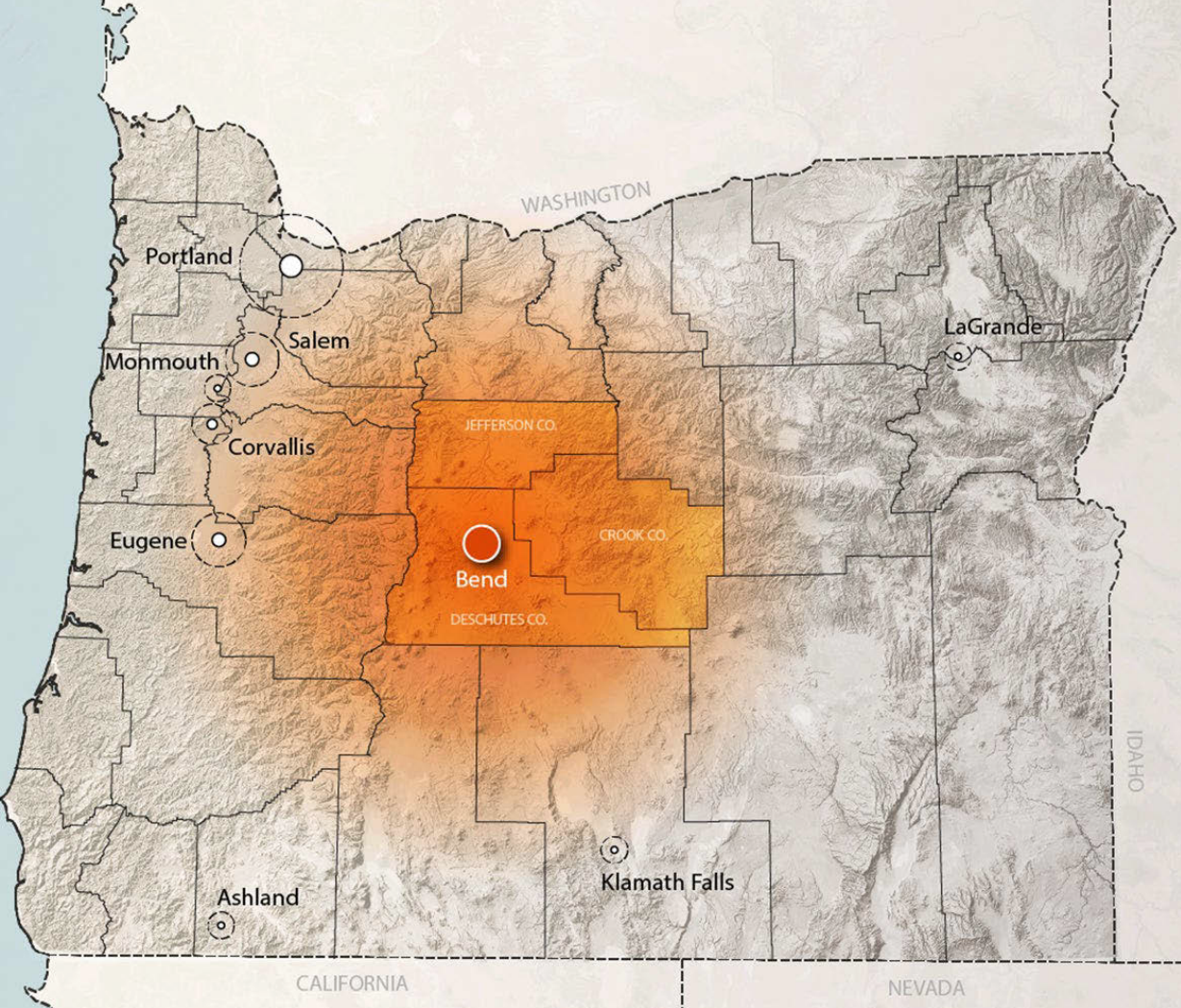
- 8,053 Headcount / 1,589 FTE

OSU-Cascades:

- 1,259 Headcount / 789 FTE
- 17 majors + 3 master programs

Bend-LaPine School District:

- 1,100 High School Grads in 2018





OSU-CASCADES INSTITUTIONAL MISSION & GOALS

OSU-Cascades is a high quality, comprehensive four-year university and major contributor to the vitality of the unique Central Oregon community and environment. It aims to:

- Leverage the built and natural environments as living laboratories
- Knit the campus into the fabric of the community
- Implement cutting edge pedagogy that addresses all learning styles
- Enhance partnerships with businesses, non-profits, school districts, higher education and government entities that support the region's priorities





BEND SCIENCE STATION ORGANIZATIONAL MISSION & GOALS

The Bend Science Station provides high-quality, laboratory-based science education for more than 7,000 students and their teachers a year. We open minds and open doors, empowering young scientists to change lives, including their own.

- 7,000 students
- 200 teachers
- 40 schools
- 18 years
- 4 staff

COMMON PURPOSE ON THE CASE FOR CO-LOCATION

OSU-CASCADES

- ***K-12 students on university campus and Long Term Recruitment***



BEND SCIENCE STATION



COMMON PURPOSE ON THE CASE FOR CO-LOCATION

OSU-CASCADES

- K-12 students on university campus and Long Term Recruitment



BEND SCIENCE STATION

- ***Equity Lens + Opportunity***



COMMON PURPOSE ON THE CASE FOR CO-LOCATION

OSU-CASCADES

- K-12 students on university campus and Long Term Recruitment
- ***MAT + science collaboration***

BEND SCIENCE STATION

- Equity Lens + Opportunity



COMMON PURPOSE ON THE CASE FOR CO-LOCATION

OSU-CASCADES

- K-12 students on university campus and Long Term Recruitment
- MAT + science collaboration

BEND SCIENCE STATION

- Equity Lens + Opportunity
- ***K-20 teaching + learning of STEM***



COMMON PURPOSE ON THE CASE FOR CO-LOCATION

OSU-CASCADES

- K-12 students on university campus and Long Term Recruitment
- MAT + science collaboration
- ***Community campus***

BEND SCIENCE STATION

- Equity Lens + Opportunity
- K-20 teaching + learning of STEM



COMMON PURPOSE ON THE CASE FOR CO-LOCATION

OSU-CASCADES

- K-12 students on university campus and Long Term Recruitment
- MAT + science collaboration
- Community campus

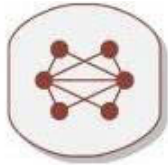
BEND SCIENCE STATION

- Equity Lens + Opportunity
- K-20 teaching + learning of STEM
- ***Nonprofit visibility + exposure***



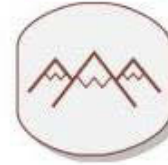
OSU-CASCADES PLANNING PRINCIPLES:

PERMEABLE & CONNECTED



- Permeable at Campus Edges
- Welcoming to Public
- Engaging the Community

INSPIRATIONAL & MEMORABLE



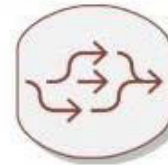
- Transform and Celebrate Site
- Define goal for community to leave healthier and more conscientious than when they arrived

SUSTAINABLE & RESILIENT

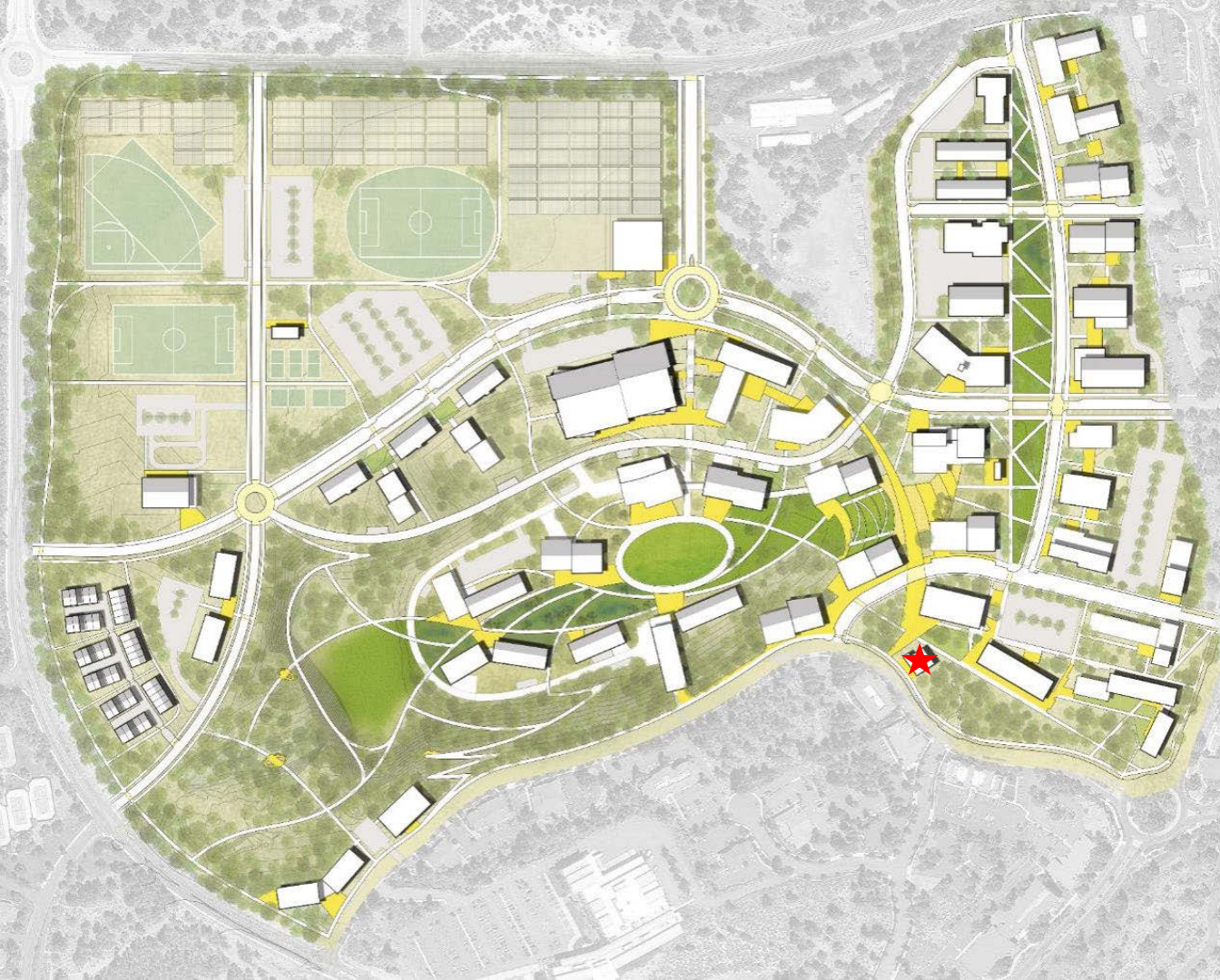


- Rehabilitation of Brownfield Site
- Net-Zero Energy/Water/Waste
- Social and Economic Resilience

INTEGRATED & INNOVATIVE

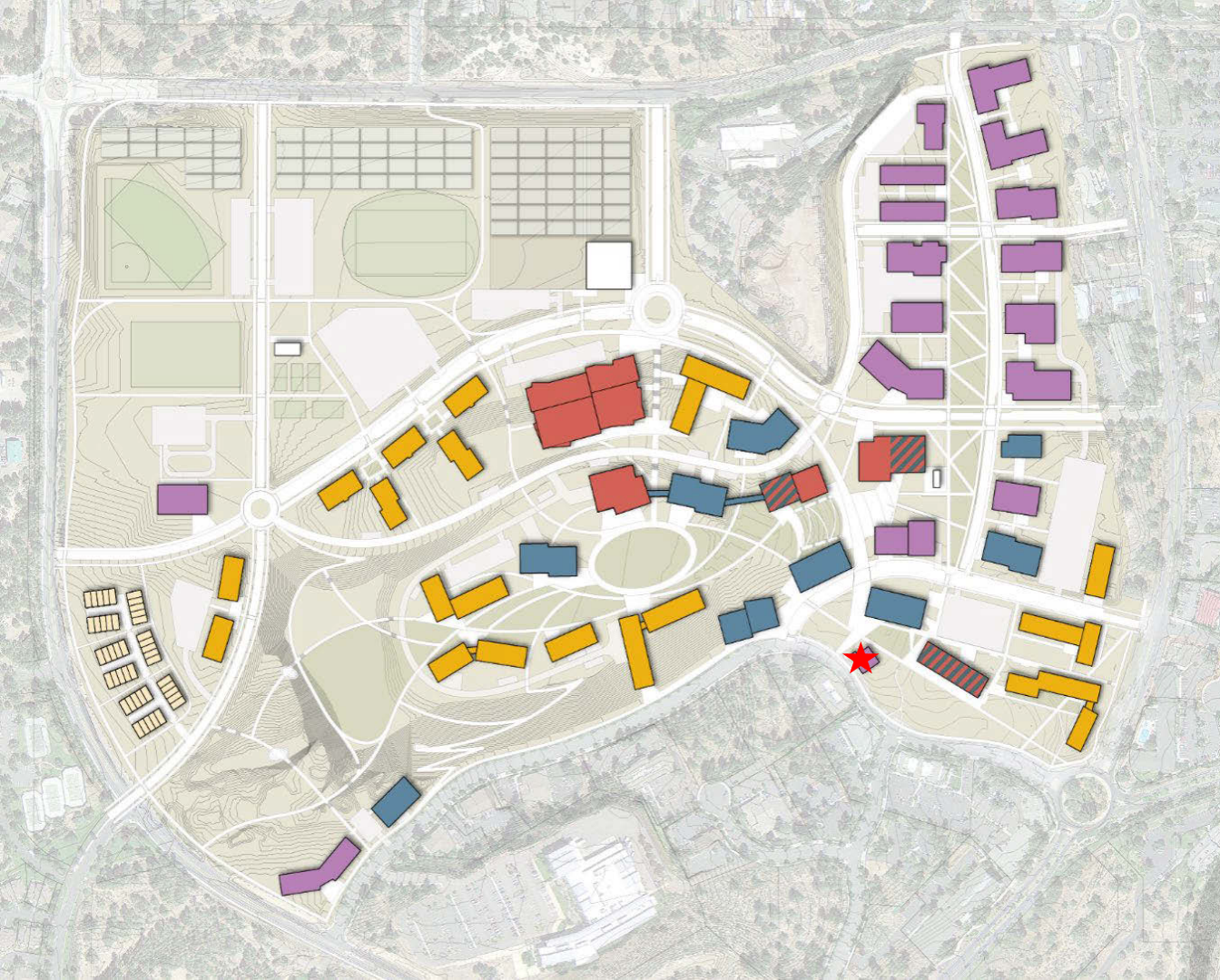


- Mix of uses across campus
- Co-location with symbiotic partners
- Campus as a living laboratory



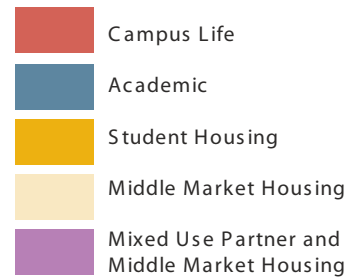
LONG RANGE DEVELOPMENT PLAN

- 5,000 Student Campus
- 128-acre site (93-acre brownfield)
- Academic: 460,000 gsf
- Residential: 672,000 gsf (40% of student population)
- Campus Life: 265,000 gsf
- Innovation District: 450,000 gsf (includes 350 housing units)



PRIMARY BUILDING USE

- Most buildings will have a mix of uses
- Campus center blends the Innovation District, academic core, and campus life functions
- Residential villages





INITIAL 10-ACRE DEVELOPMENT

- Academic: 61,000 gsf
- Residential: 82,000 gsf (300 beds)
- Campus Life: 13,500 gsf
- Bend Science Station: 3,750 gsf
- Parking: 320 cars



Tykeson Hall / Bora Architects



Residence Hall / SERA Architects



Obsidian Hall / SERA Architects



Bend Science Station / Hennebery Eddy Architects







BROADENING THE IMPACT

- Living the mission
- Learners as teachers
- Creating next generation scientists
- Creating a K-20 community based on inquiry



“Bend Science Station has given me a good standard to look up to... it has provided a good model for me.”

“Since coming here, I’m really excited to teach science. I like the model I see and now I hope to emulate that in my classroom.”

-Students in the MAT program



EDUCATION ON DISPLAY



S.T.A.R. Labs from The Flash

EDUCATION ON DISPLAY



ALIGNING FOR A UNIVERSAL CAMPUS EXPERIENCE

- Building community (through building placement and design)
- Building community (through programming and collaboration)
- Test model for future partnerships (Bend LaPine Lab School & Early Learning Center)
- Education on display Learning Laboratory





MOTOR START

Motor Start
Spiral
Number

