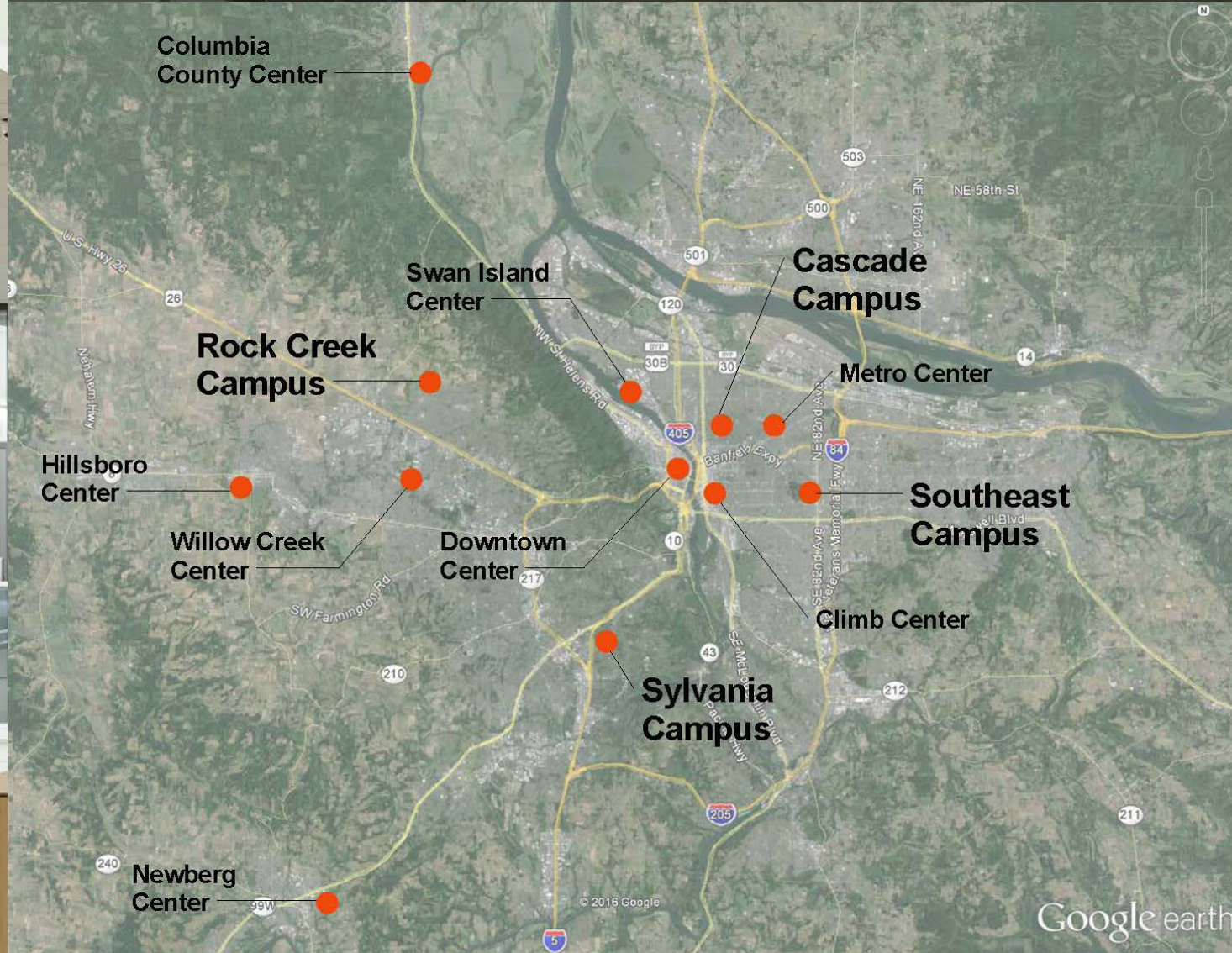




# Critical Race Theory in Programming

Presented by Amara H. Pérez | March 2019  
Intent & Purposes, LLC.

# Who is PCC



An aerial photograph of a modern university building with large glass windows and brick accents. The building is surrounded by a paved courtyard with several raised garden beds containing various plants and trees. A person is walking in the courtyard. The sun is setting in the background, creating a warm glow. A semi-transparent white banner is overlaid across the middle of the image, containing the text "What is PCC Embarking On".

# What is PCC Embarking On



# What is a Critical Race Spatial Lens?

# Tenets: Critical Race Spatial Analysis

Racism is embedded and engrained in all aspects of society, including built environments.

Space is not neutral; it is ideological and racialized.

Space functions as a mechanism of social reproduction.

Dominant narratives mask racism/white supremacy.

Identity and positionality shape our socio-spatial experiences and perceptions.

Voice, experiential knowledge, stories of people of color as counter-narratives.





# CRT in Practice

# Project Design

Develop shared lens and language

- CRT trainings and dialogue sessions
- Repository of online resources: Race, space, & equity

Practice

- Activities and exercises
- Applied CRT in project workgroups: IT, transportation, sustainability, public safety, facilities

Inquiry

- Focus groups
- Interviews
- Storytelling
- Surveys

Student leadership



# Student Leadership & Inquiry Project

## Training:

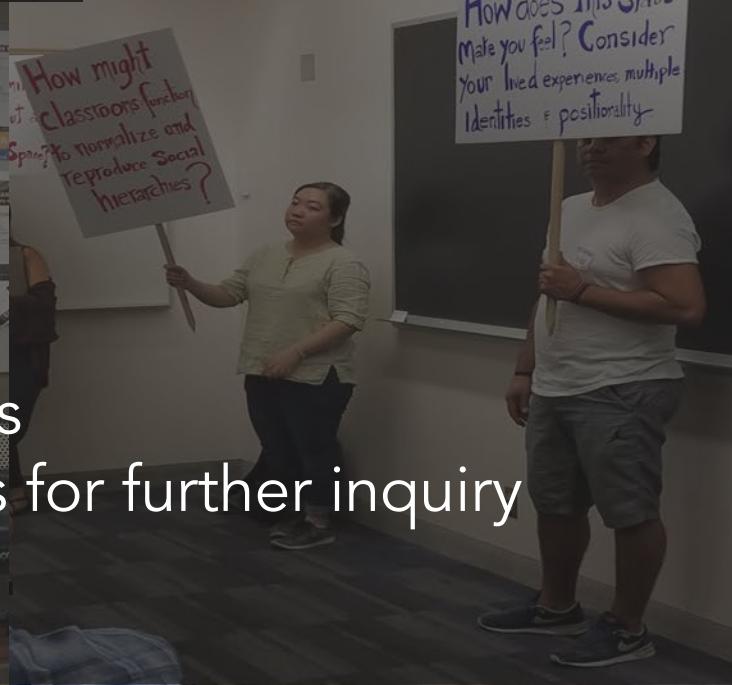
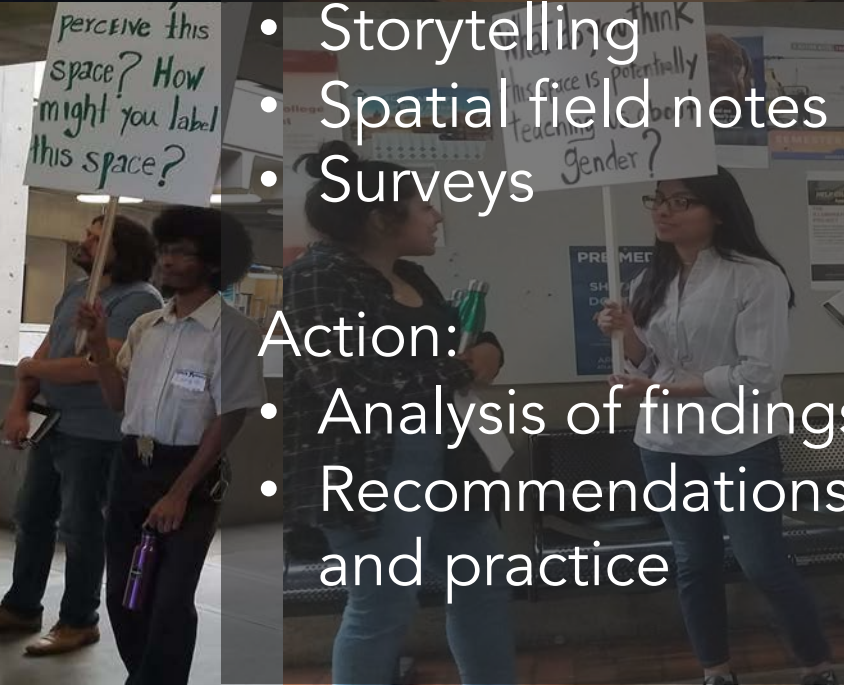
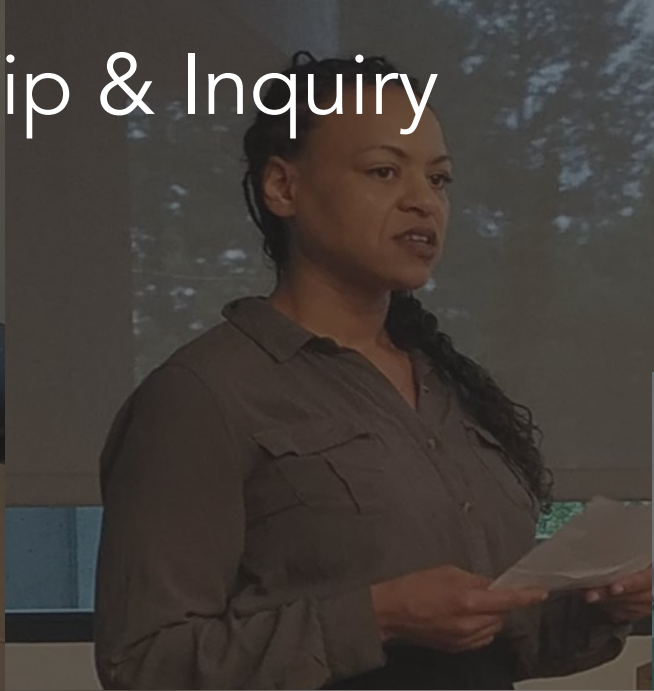
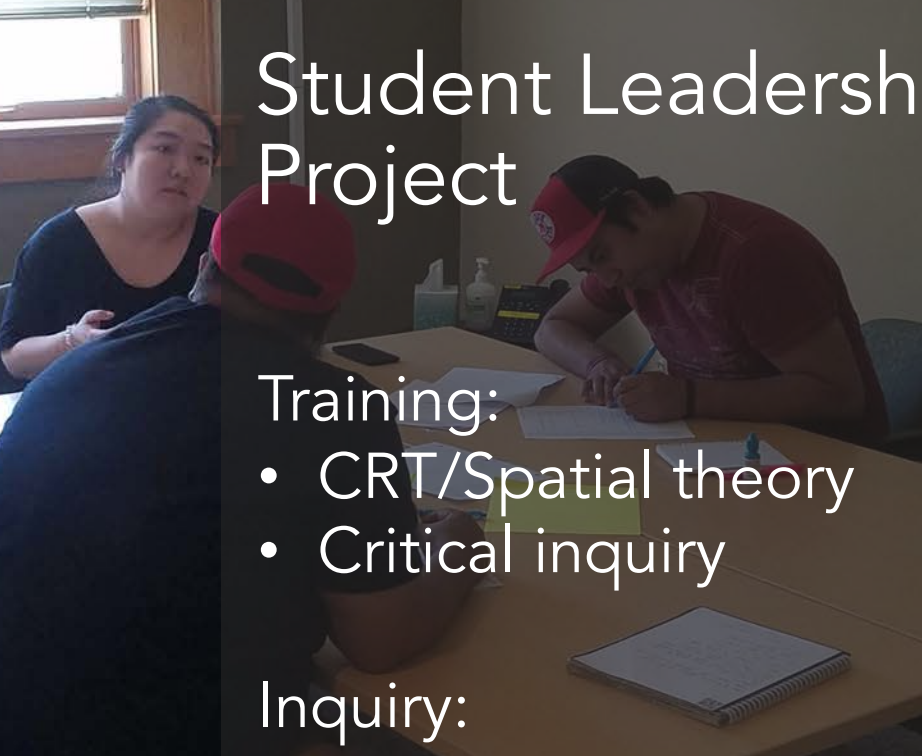
- CRT/Spatial theory
- Critical inquiry

## Inquiry:

- Storytelling
- Spatial field notes
- Surveys

## Action:

- Analysis of findings
- Recommendations for further inquiry and practice







Programming

Introductions

Orientation to the Space

Inquiry

Activity

Training

Participants

# Programming



**INTRODUCTIONS**



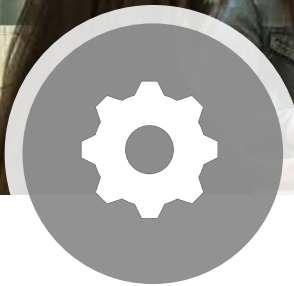
**Current**  
Name and role



**Possible**  
Name, role, social identities

- Invite people to share their multiple identities

# Programming



## ORIENTATION TO SPACE



## Current

- Review existing plan
- Tour existing space
- Take pictures of space



## Possible

- Take pictures of space
- Design team and users
- Guided by inquiry questions

# Programming



## INQUIRY



## Current

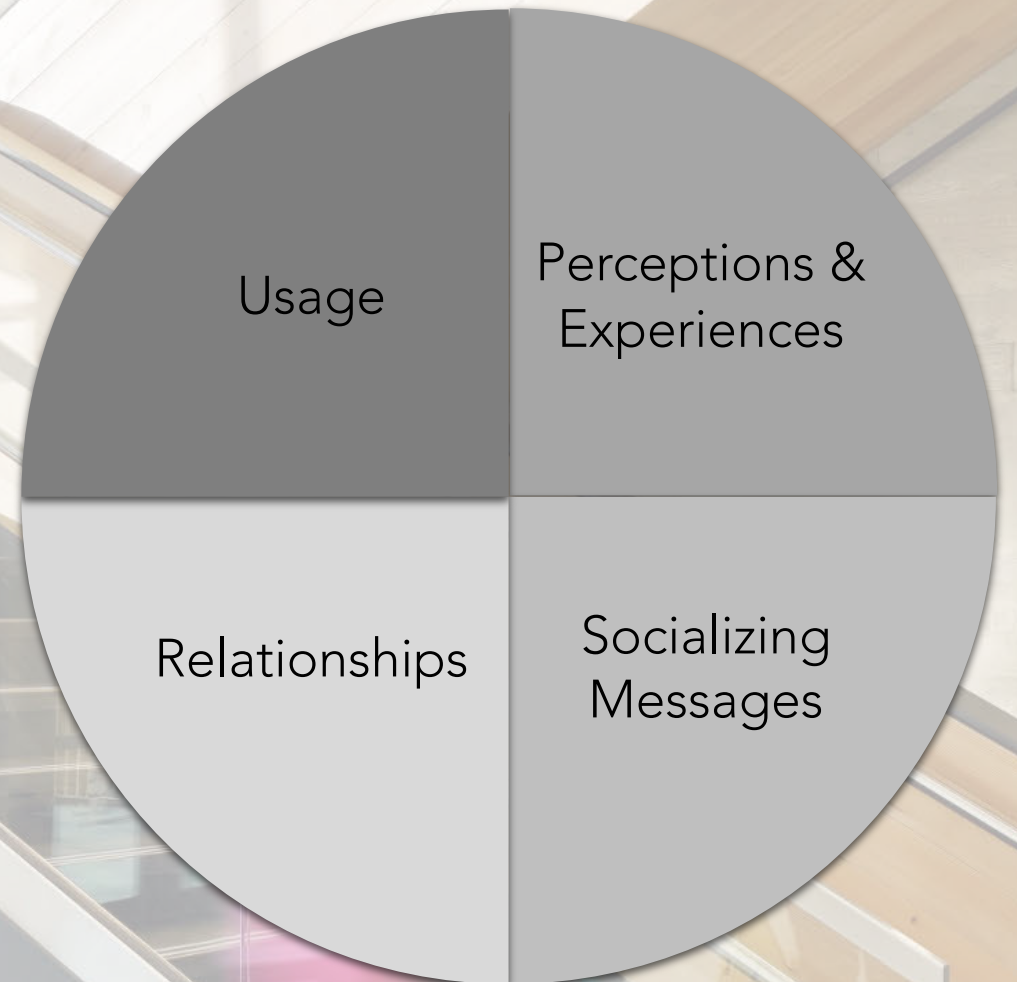
Kinds of space needed?  
What's working?  
Missing?  
Not needed anymore?  
Experiences in space?



## Possible

*Inquiry Wheel* as a guide to go beyond usage questions and explore social and cultural dimensions of space

# Inquiry Wheel



# Programming



## ACTIVITY



## Current

Image cards: How do you want new space to feel?  
(*Ideal & aspirational space*)



## Possible

“Space Bingo”—users take pictures of department space that match descriptors (*Social dimensions of space*)

- Safe-space, inclusive-space, intimidating-space
- Images and stories inform planning and design



# Programming



**TRAINING**



**Current**



**Possible**

Workshop: *Reading College Space*

- Community building event and orientation to CRT/ST
- Analyze pictures taken by design team and users
- Generate ideas to communicate inclusion
- Insights and ideas inform planning and design



# Programming



## PARTICIPANTS



## Current

Department leadership:  
FT/PT faculty, staff, admin,  
students; First staff (60 min)  
then students (30 min)



## Possible

Round One: Student session (75 min)

- Activities: Space bingo, mapping

Workshops: (90 min) (Conduct 5-7 sessions)

- Engage: Faculty/staff/students of color; Student groups/resource center leaders; College community members



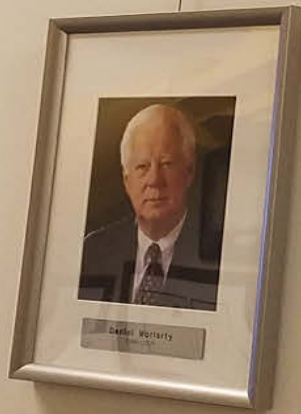
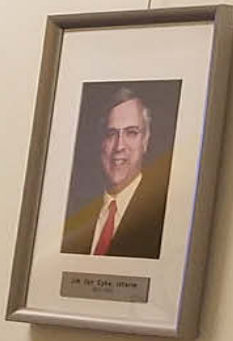


CASCADE HALL

# Activity



# PORTLAND COMMUNITY COLLEGE PAST PRESIDENTS



Jesus Carreon  
2001-2003



233D



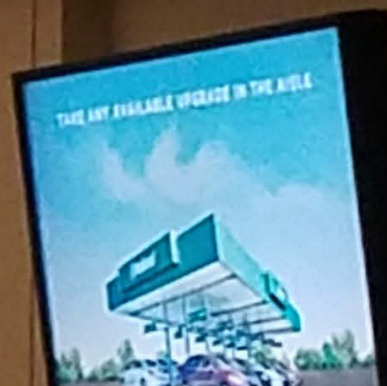
**Women**



**Family  
Restroom**



**Men**



# Questions

