

The Accelerator At Highlander





seventy5north
REVITALIZATION

HIGHLANDER HISTORY

1890s

Prospect Place was established. The first house was located at 3003 Charles Street.

1905

More than 200 homes were constructed and the once thriving community was home to many services and amenities.

1940s

Identified for redevelopment by the US Government for a series of large-scale low-income housing projects.

1975

The City of Omaha began planning the construction of the North Freeway. Hundreds of homes were seized and razed and thousands of residents were displaced.

1980s

+

1990s

The forgotten housing development became a center for drugs, gang activity, and senseless murders.

2009

Omaha Housing Authority was given permission to demolish Pleasantview housing.



Image U.S. Geological Survey



SEVENTY FIVE NORTH

Founded in 2011, with one purpose: to facilitate the revitalization of a healthy, sustainable, mixed-income community in the Highlander neighborhood.



OUR MODEL

CRADLE-TO-COLLEGE EDUCATION



Preparing young children for success throughout their academic years, all focused on preparing students for college and beyond.

MIXED-INCOME HOUSING



An opportunity for people of different backgrounds to become neighbors and friends, sharing pride in their community and an enhanced quality of life.

HEALTH AND WELLNESS



A community-specific mix of facilities, programming and services that represent the vision, needs and priorities of residents.



ELEMENTARY

SALEM BAPTIST CHURCH

CHARLES DREW

HIGHLANDER SITE

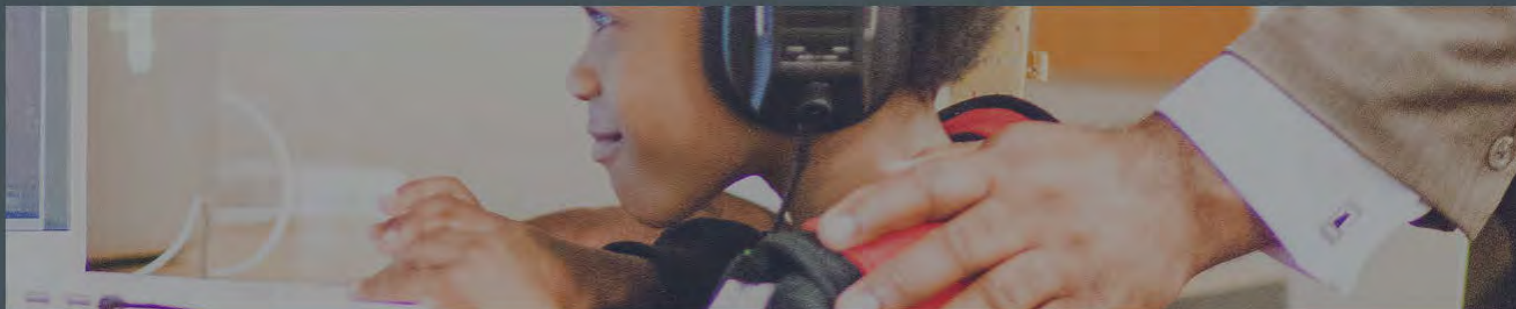
75N

75

Map labels: Erskine St, N 22nd St, N 21st St, N 20th St, N 19th St, N 18th St, N 17th St, N 16th St, N 15th St, N 14th St, N 13th St, N 12th St, N 11th St, N 10th St, N 9th St, N 8th St, N 7th St, N 6th St, N 5th St, N 4th St, N 3rd St, N 2nd St, N 1st St, N 34th Ave, N 33rd Ave, N 32nd Ave, N 31st Ave, N 30th Ave, N 29th Ave, N 28th Ave, N 27th Ave, N 26th Ave, N 25th Ave, N 24th Ave, N 23rd Ave, N 22nd Ave, N 21st Ave, N 20th Ave, N 19th Ave, N 18th Ave, N 17th Ave, N 16th Ave, N 15th Ave, N 14th Ave, N 13th Ave, N 12th Ave, N 11th Ave, N 10th Ave, N 9th Ave, N 8th Ave, N 7th Ave, N 6th Ave, N 5th Ave, N 4th Ave, N 3rd Ave, N 2nd Ave, N 1st Ave, Burdette St, Erick Ave, Londo St, Parker St, Cemetery Rd, Miami St, Ohio St, Lindsay Ave, North Hwy, N 27th St, N 26th St, N 25th St, N 24th St, N 23rd St, N 22nd St, N 21st St, N 20th St, N 19th St, N 18th St, N 17th St, N 16th St, N 15th St, N 14th St, N 13th St, N 12th St, N 11th St, N 10th St, N 9th St, N 8th St, N 7th St, N 6th St, N 5th St, N 4th St, N 3rd St, N 2nd St, N 1st St.



CRADLE-TO-COLLEGE EDUCATION









MIXED-INCOME HOUSING







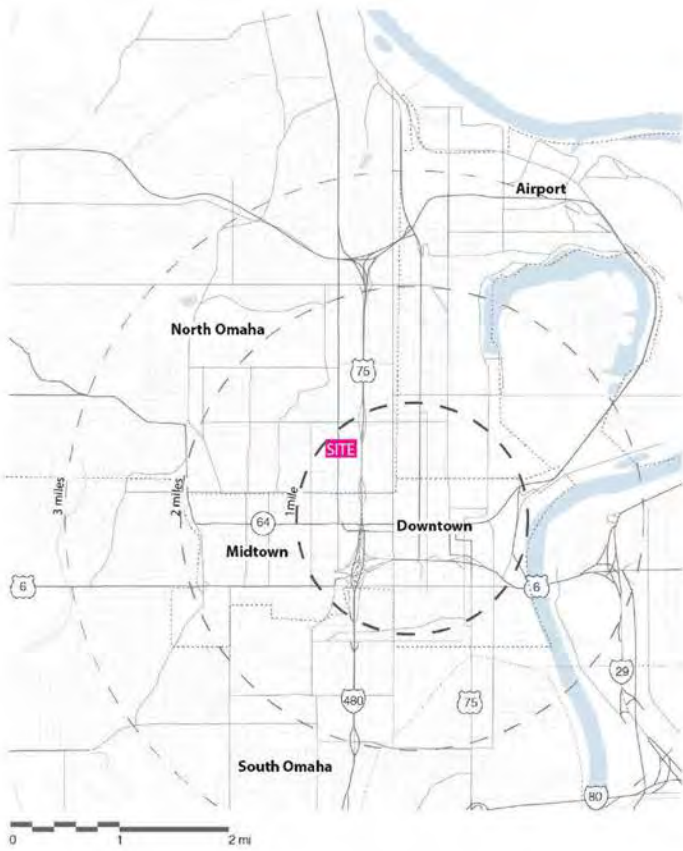


THE ACCELERATOR

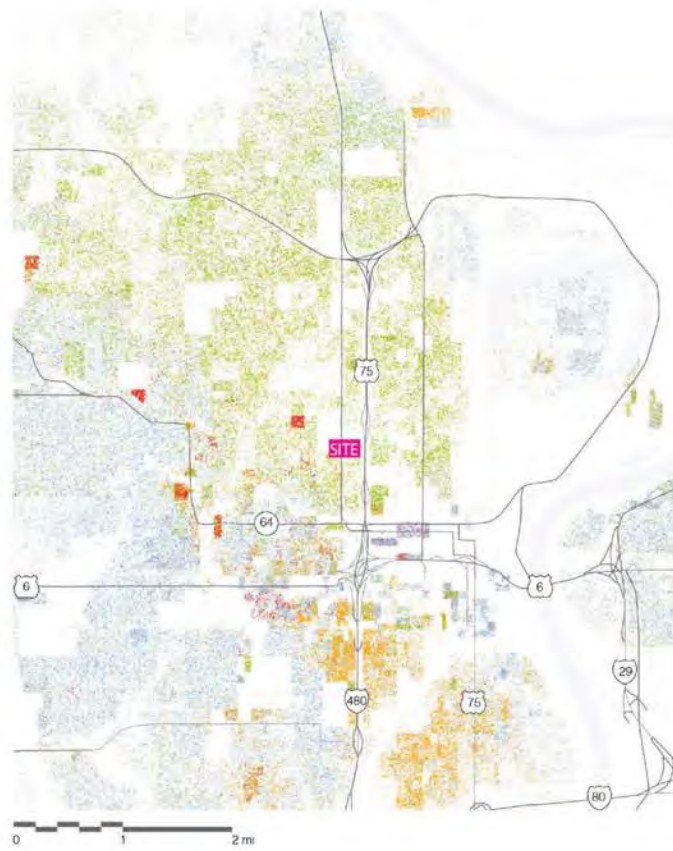
The massive, 65,000 square foot building located on the edge of the Highlander neighborhood is filled with education, wellness and socializing amenities. Every organization located in the Accelerator creates experiences and activities to empower the community.



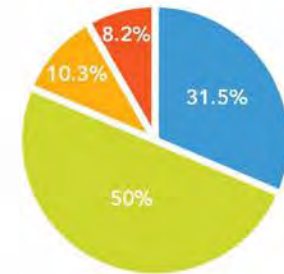




Proximity to downtown



Omaha Demographics



North Omaha: 45,623

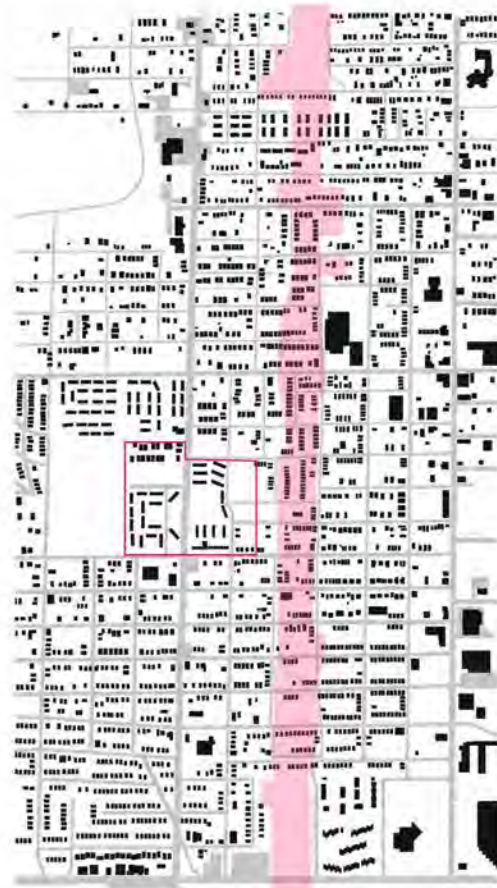
White Black Hispanic Asian/Other

infographics: <https://statisticalatlas.com/county/Nebraska/Douglas-County/Household-Income-Map> <http://demographics.virg.nea.edu/Dotmap/>

Site Location

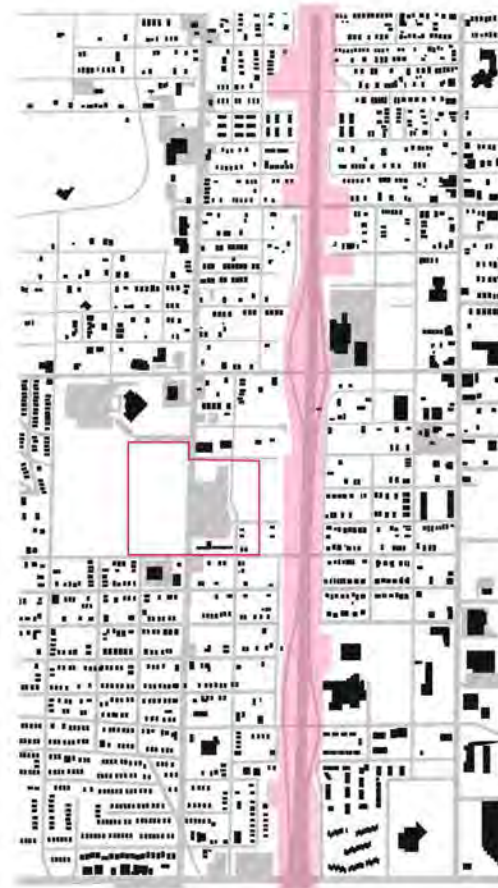
1958

Years of systemic segregation had concentrated Black residents into a tight quadrant of North Omaha. Yet the community persevered and a vibrant, creative neighborhood emerged.



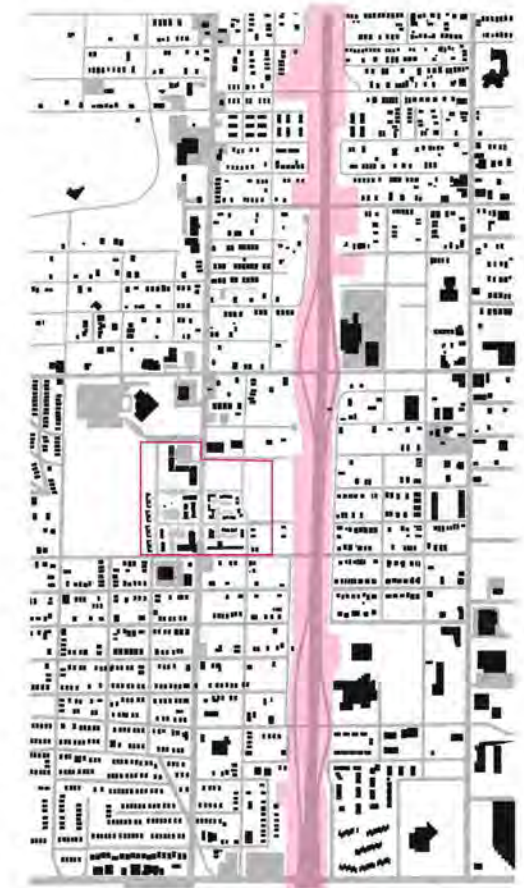
2009

The community was abruptly ripped apart by the insertion of the I-75 North Freeway in 1978. And additional demolition of properties resulted in the loss of nearly 1,000 buildings during this period, including the Pleasantview Homes Development.



Rebuilding

In 2011, Seventy Five North Revitalization Core was established, a 501(c) (3) nonprofit, to drive the redevelopment of the Highlander Neighborhood in North Omaha. By 2012, the organization owned 36 acres of contiguous land.



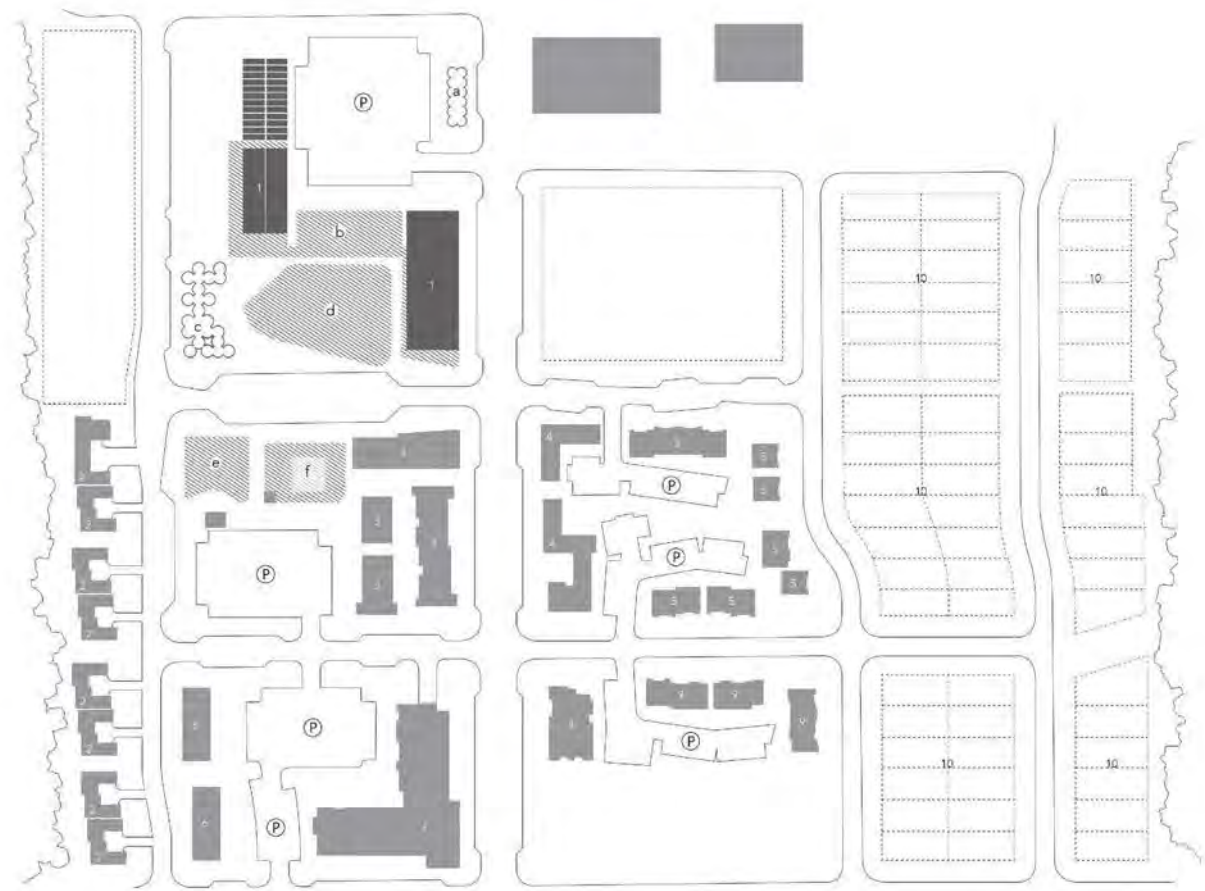
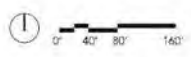
— Highlander Site
— I-75 North Freeway

- Accelerator 1
- Live/Work Units 2
- Multi-Family Housing 3
- Multi-Family Housing 4
- Attached Rental Units 5
- Townhomes 6
- Senior Housing 7
- Multi-Family Housing 8
- Attached Rental Units 9
- Single Family Housing 10

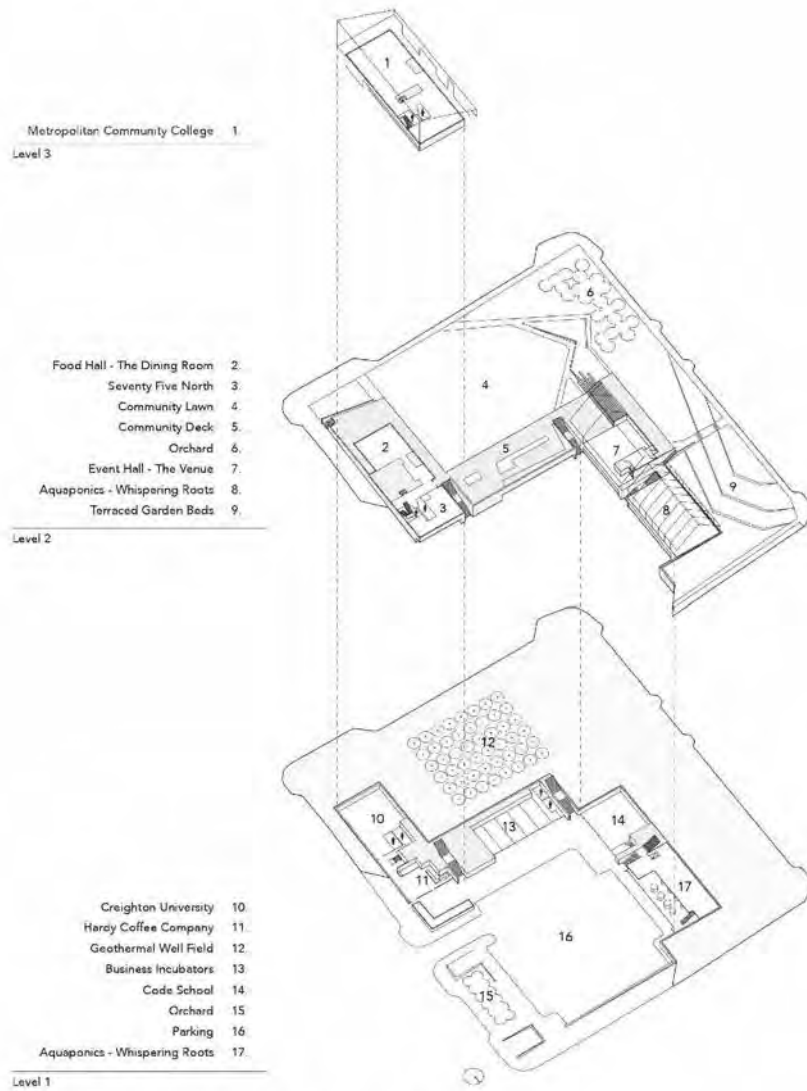
Parking P

- Orchard a
- Community Deck b
- Orchard c
- Community Lawn d
- Playground e
- Swimming Pool f

Housing Statistics:
Phase 1 (completed): 101 Residential Units



Highlander Site Plan - Purpose Built Model



EDUCATION:

1. Metropolitan Community College 10. Creighton University



COMMUNITY SERVICES & ENTREPRENEURSHIP:

3. Seventy Five North 13. Business Incubators



FOOD & EVENTS:

2. Food Hall - The Dining Room 11. Hardy Coffee Company



7. Event Hall - The Venue

8. Aquaponics - Whispering Roots



Accelerator Tenancy - City in a Building



1. CREIGHTON UNIVERSITY



2. METROPOLITAN COMMUNITY COLLEGE



3. EVENT HALL - THE VENUE



4. AQUAPONICS - WHISPERING ROOTS



5. FOOD HALL - THE DINING ROOM



6. HARDY COFFEE COMPANY



7. SEVENTY FIVE NORTH



8. BUSINESS INCUBATORS





















gabunion



BAKERY		ICE CREAM	
Chocolate Chip	\$3.50	Vanilla	\$2.50
Apple Pie	\$3.50	Chocolate	\$2.50
Blueberry	\$3.50	Strawberry	\$2.50
Banana	\$3.50	Orange	\$2.50
Strawberry	\$3.50	Peppermint	\$2.50
Apple	\$3.50	Rocky Road	\$2.50
Blueberry	\$3.50	White Chocolate	\$2.50
Chocolate	\$3.50	Double Chocolate	\$2.50
Apple	\$3.50	Vanilla	\$2.50
Blueberry	\$3.50	Chocolate	\$2.50

BEVERAGES		
COFFEE	TEA	ADD-ONS
Espresso	Tea	Almond
Cappuccino	Matcha	Coconut
Cortado	Chai	Vanilla
Latte	Herbal	Chocolate
Macchiato	Green Tea	Caramel
Flat White	Black Tea	Hot Sauce
Dirty Chai	White Tea	Syrup
Dirty Matcha	Earl Grey	Sweetener
Dirty Espresso	Peppermint	Whipped Cream
Dirty Latte	Spiced Apple	Chocolate Shavings
Dirty Cappuccino	Spiced Orange	Chocolate Dipped
Dirty Macchiato	Spiced Pear	Chocolate Drizzle
Dirty Flat White	Spiced Plum	Chocolate Sprinkle
Dirty Cortado	Spiced Raspberry	Chocolate Swirl
Dirty Espresso	Spiced Strawberry	Chocolate Dip
Dirty Cappuccino	Spiced Blueberry	Chocolate Glaze
Dirty Latte	Spiced Lemon	Chocolate Sauce
Dirty Macchiato	Spiced Peach	Chocolate Frosting
Dirty Flat White	Spiced Mango	Chocolate Ganache
Dirty Cortado	Spiced Apricot	Chocolate Buttercream
Dirty Espresso	Spiced Kiwi	Chocolate Meringue
Dirty Cappuccino	Spiced Elderberry	Chocolate Panna Cotta
Dirty Latte	Spiced Elderflower	Chocolate Cheesecake
Dirty Macchiato	Spiced Elderflower	Chocolate Tiramisu
Dirty Flat White	Spiced Elderflower	Chocolate Bûche de Noël
Dirty Cortado	Spiced Elderflower	Chocolate Bûche de Noël
Dirty Espresso	Spiced Elderflower	Chocolate Bûche de Noël

Handwritten menu items on a chalkboard:

- Apple & the Apple
- Apple & the Apple
- Apple & the Apple





Creighton
UNIVERSITY

SUGAR SHOCKER

