

Designing Libraries for Learning

Peggy Seiden

College Librarian of Swarthmore College

SCUP Mid-Atlantic Meeting

June 17, 2019

Library Design Through the Ages

Reader Centric □ Book Centric □ Learner Centric



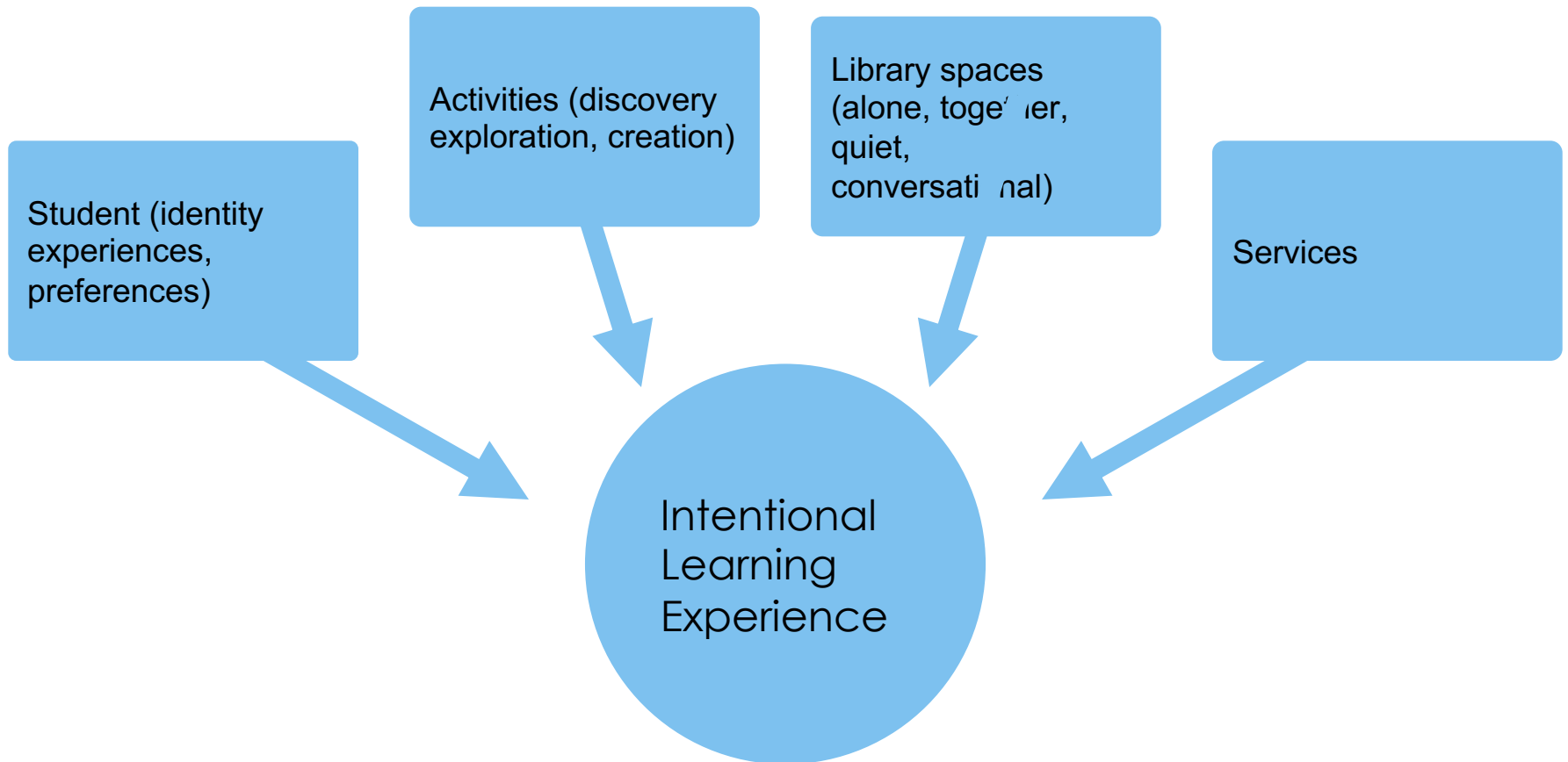
A Library Is:

First and foremost a learning environment; a laboratory:

- ▣ Interdisciplinary
- ▣ Facilitates social construction of knowledge
- ▣ Supports evolving pedagogy and scholarship, partnering with faculty
- ▣ Fosters curiosity, scholarly risk taking
- ▣ Where students are responsible for their own learning

- ▣ A third space – a student place
- ▣ Sacred and inspirational
- ▣ Contemplative
- ▣ Communal; builds a sense of belonging to a community
- ▣ Inclusive and comfortable

A Basic Model



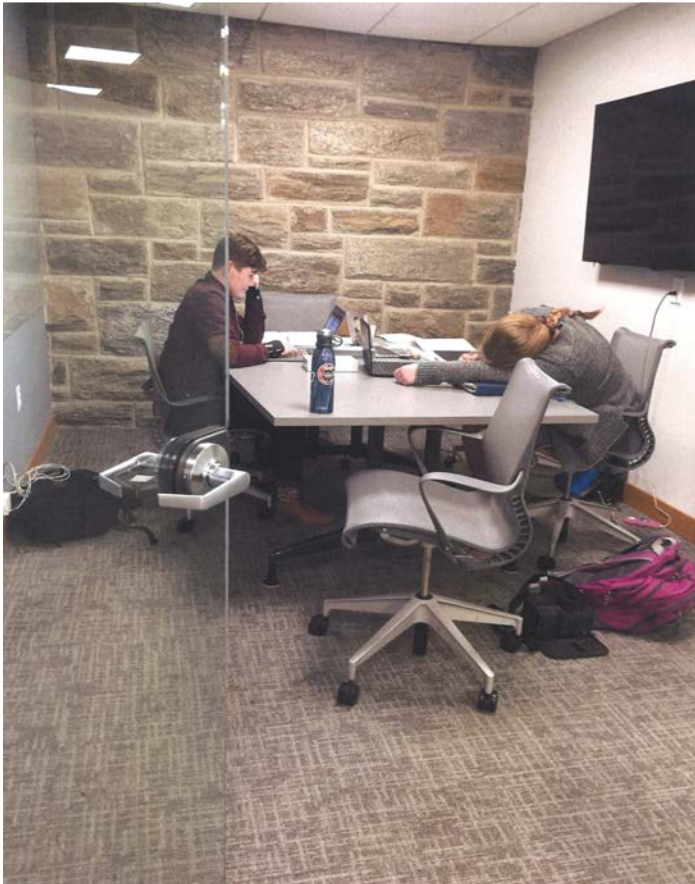
Library as Scholarly Commons



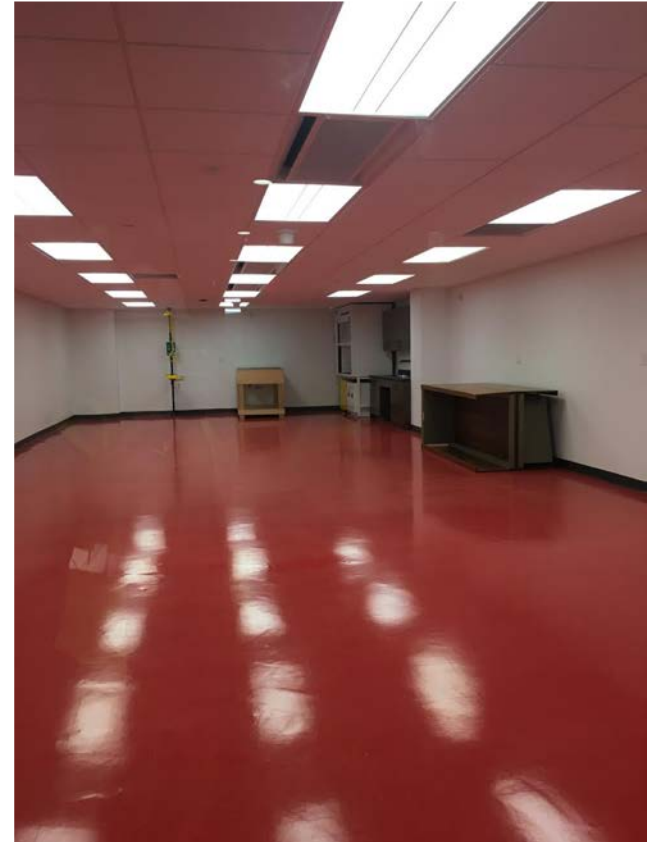
Learning happens through
conversations with texts, ideas,
people



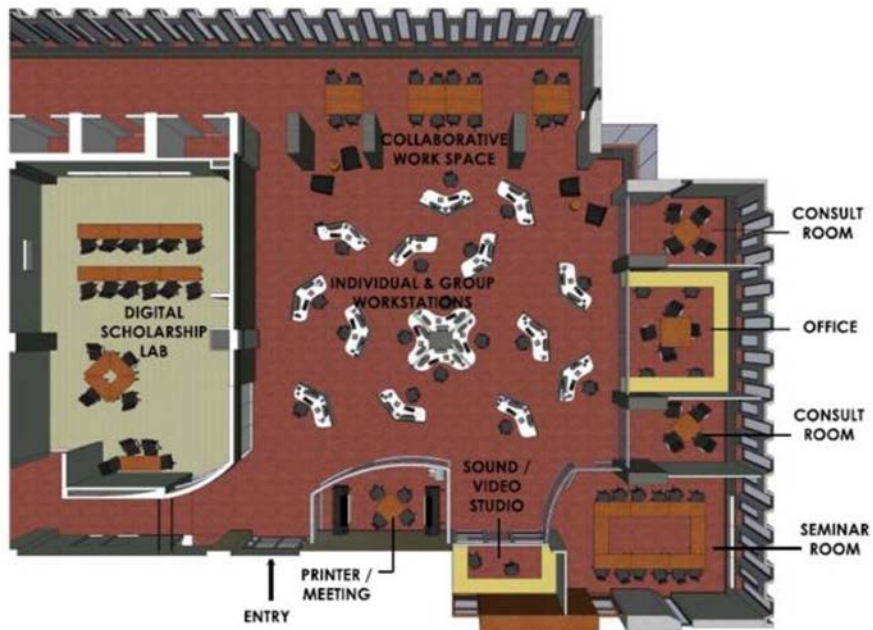
Study Spaces:



Special Collections: Research and Teaching



Digital Scholarship Spaces



PROPOSED DIGITAL STUDIO
BROWN UNIVERSITY (Nov. 2013)

Ed Wojcik
architects llc



Maker and Design Spaces



Exhibition, Gallery Space, Programming



Ingredients for Successful Learning Spaces



Ingredients for Successful Learning Spaces



Affordances: Technological Infrastructure



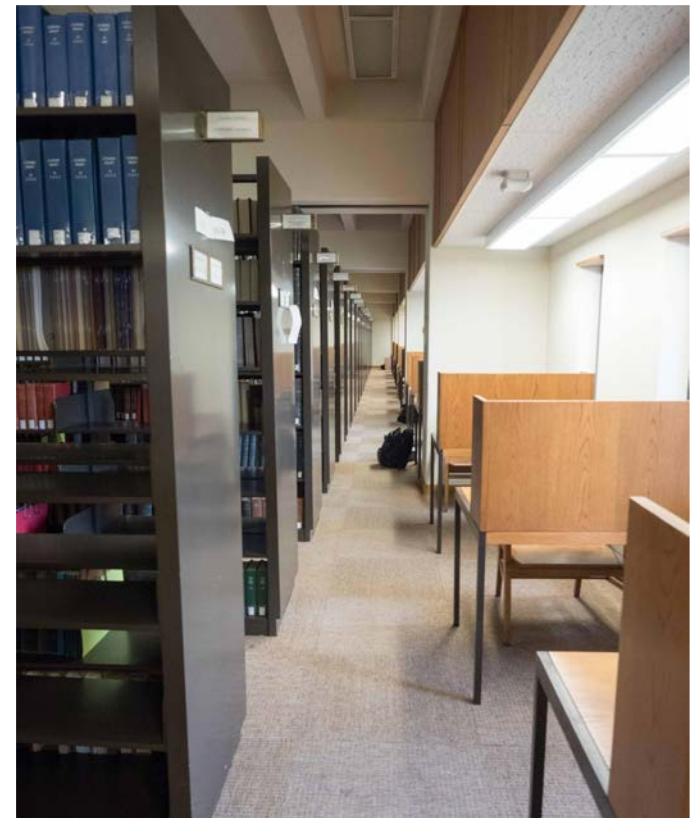
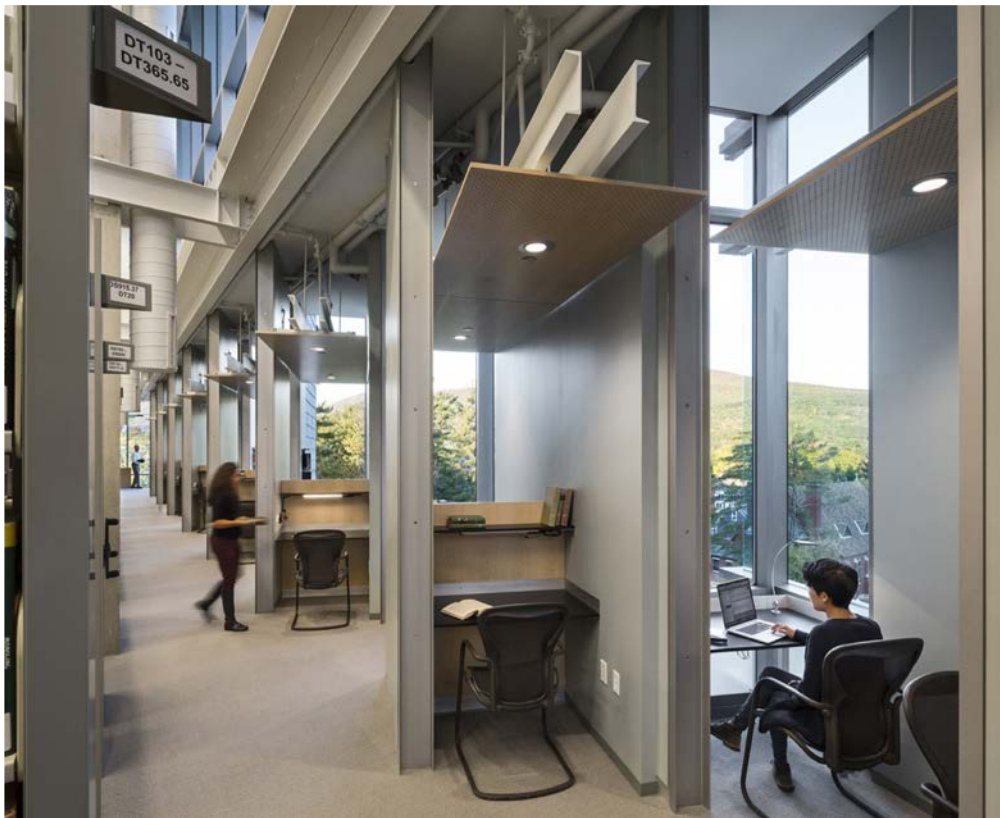
Affordances: Services and Support



Affordances: Tech and Media Support



Where am I most productive?



Where I am most productive



Where I want to stay and return to



Where I want to stay and return to

